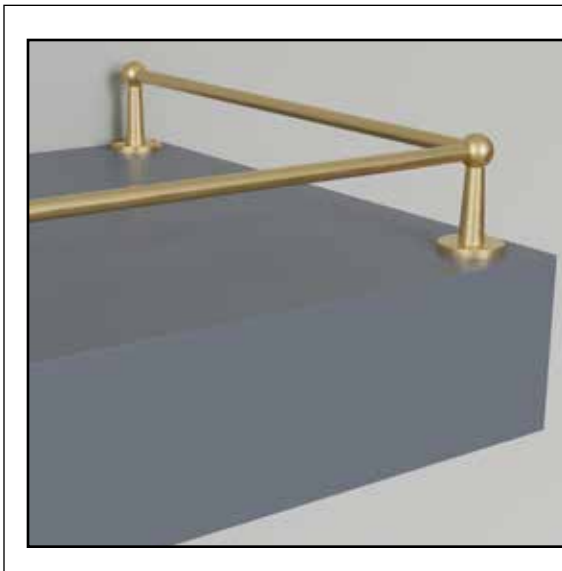


Your Guide to Gallery Rail with Designs of Distinction®

Create an elegant and sophisticated way to showcase antiques, barware, dinnerware, artwork, books, and more. Attach Gallery Rail components to the tops of cabinets, furniture, shelving and more to make use of typically unused spaces. Create an eye-catching, luxury look by installing a Gallery Rail to provide added stability, outline the perimeter of desks, bookcases, and shelving, or on the tops of cabinets. Typical spacing between posts across the front is 6"- 10" apart.

Finish Code:	CR	SB	WR	PB	SS
Finish Name:	Chrome	Satin Brass	Flat Black	Polished Brass	Stainless Steel



Pictured in Satin Brass

Gallery Rail

Corner SKU: 01HC9002SB1
.906" Diam X 1.575"H

Center SKU: 01HC9001SB1
.906" Diam X 1.575"H

End SKU: 01HC9003SB1
.906" Diam X 1.575"H

48" Rail SKU: 01HC9004SB1
6mm x 48"L

36" Rail SKU: 01HC900436SB1
6mm x 36"L

Easy to install with included hardware.



Pictured in Chrome

Gallery Rail

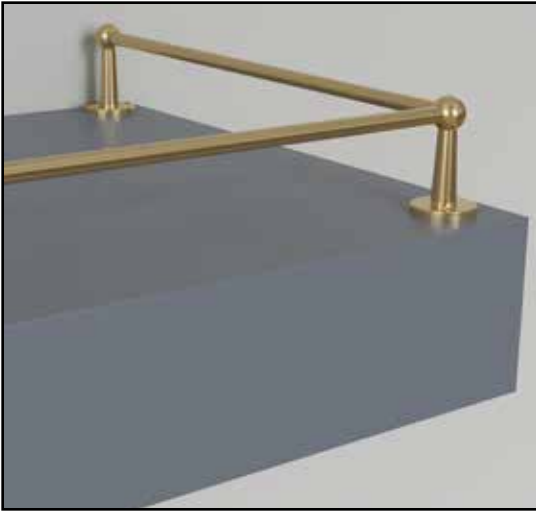
Corner SKU: 01HC9002CR1
.906" Diam X 1.575"H

Center SKU: 01HC9001CR1
.906" Diam X 1.575"H

End SKU: 01HC9003CR1
.906" Diam X 1.575"H

Rail SKU: 01HC900436CR1
6mm x 36"L

Easy to install with included hardware.



Pictured in Polished Brass

Gallery Rail

Corner SKU: 01HC9002PB1

.906" Diam X 1.575"H

Center SKU: 01HC9001PB1

.906" Diam X 1.575"H

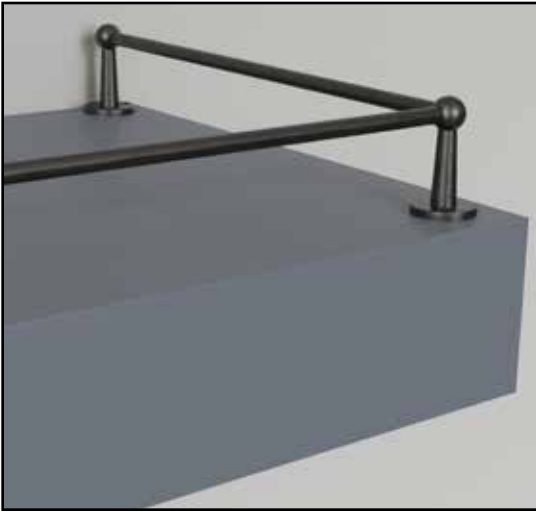
End SKU: 01HC9003PB1

.906" Diam X 1.575"H

Rail SKU: 01HC900436PB1

6mm x 36"L

Easy to install with included hardware.



Pictured in Flat Black

Gallery Rail

Corner SKU: 01HC9002WR1

.906" Diam X 1.575"H

Center SKU: 01HC9001WR1

.906" Diam X 1.575"H

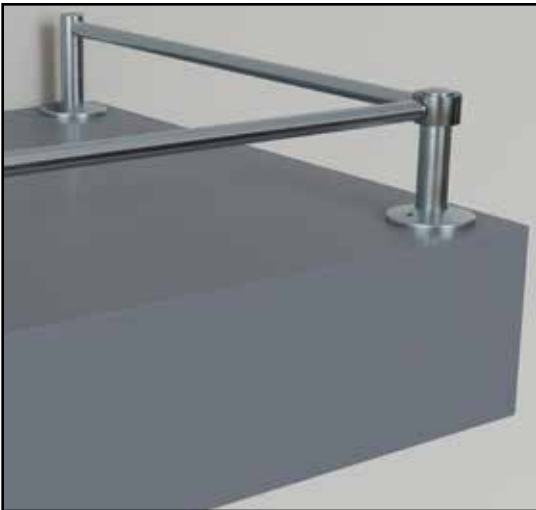
End SKU: 01HC9003WR1

.906" Diam X 1.575"H

Rail SKU: 01HC900436WR1

6mm x 36"L

Easy to install with included hardware.



Pictured in Stainless Steel

Gallery Rail

Center SKU: 01HC901SS1

.906" Diam X 1.575"H

End SKU: 01HC9013SS1

.906" Diam X 1.575"H

Rail SKU: 01HC900436SS1

6mm x 36"L

Corner Adapter SKU: 01HC8012SS1

1.102" Diam X 1.654"H

Easy to install with included hardware.