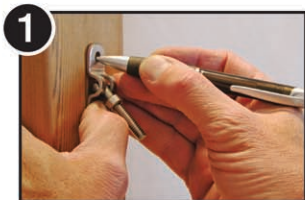




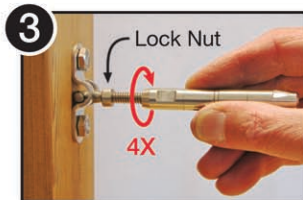
Installing the Quick-Connect® Surface Mount Swivel Turnbuckle



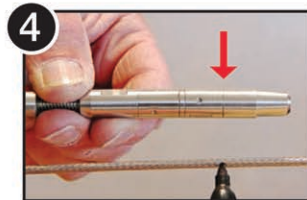
1 Measure, mark, and drill pilot holes.



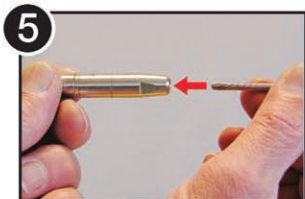
2 Bolt/screw Surface Mount fitting to wall/post (bolts or screws sold separately)



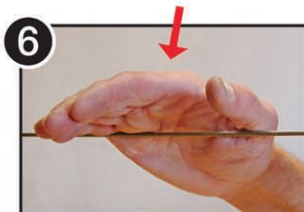
3 Spin the turnbuckle lock-nut onto the exposed threads. Then attach Quick-Connect® and rotate the body 4 full turns.



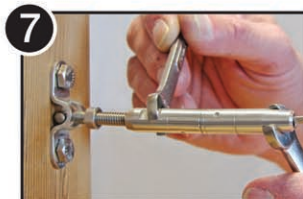
4 Stretch cable tight across fitting and mark at Cut Gauge Line. Cut cable at mark.



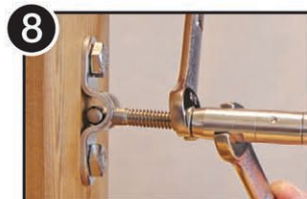
5 Loosen Quick-Connect® 2 full turns and insert cut cable end as far as it will go into the fitting; the jaws will automatically lock on.



6 Hand tighten the Quick-Connect® as far as possible, then swiftly hit the cable line with your palm several times to ensure that jaws are securely seated.



7 Use wrenches to tighten the Quick-Connect® to desired final tension.



8 Tighten the lock-nut against the Quick-Connect® to prevent the fitting from loosening.