

and trim as needed.

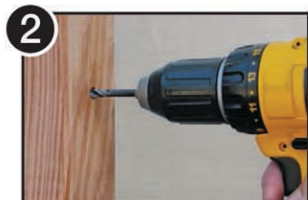
tension adjustment fitting.

## Installing Quick-Connect® Pivot Fitting

The Pivot Fitting is comprised of a Quick-Connect® body and a stainless steel Hanger Bolt. The Hanger Bolt needs to be installed prior to the Quick-Connect® body. **DO NOT** attempt to install the Hanger Bolt with the Quick-Connect® Fitting attached, or you may damage the fitting.



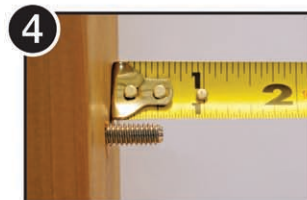
Spin Hanger Bolt Installation Tool onto the end of the bolt.



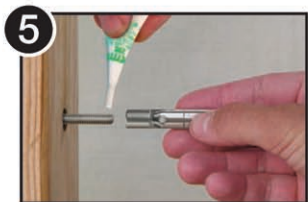
Drill 7/64" pilot hole (7/32" hole for 3/16" fitting). Harder woods may need larger hole.



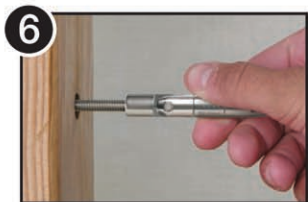
Drive Hanger Bolt into post using socket or electric drill.



Drive until threaded section protrudes approx. 1/2" from post face.



Apply a high strength thread locking compound to threads.



Spin Quick-Connect® onto Hanger Bolt until it bottoms out.



Insert cable all the way into Quick-Connect® fitting until it stops. Jaws will lock automatically.