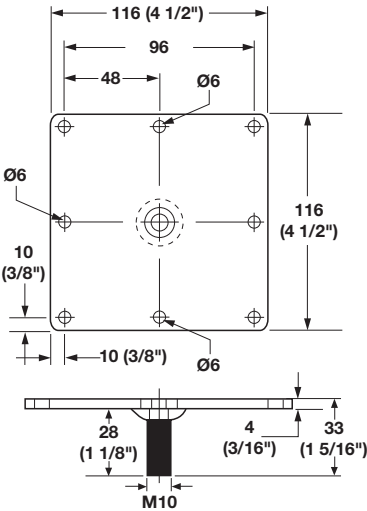


Table Legs

- Static load rating: approximately 100 kg (220 lbs.) per leg
- Available in two heights, 710 mm (28") and 876 mm (34 1/2")
- Adjustment range +25 mm (1")
- Steel square mounting plate with M10 bolt, leg screws into mounting plate
- Plastic levelers are pressed-in, they can be removed and pounded back in if legs need to be cut



E-Leg Ø60 mm

- Diameter: 60 mm (2 3/8")
 - Heights listed include mounting plate and leveler
- Material: Legs: steel, plated or epoxy-coated
Leveler: plastic; Color: black
Mounting Plate: steel; Color: black



Height	Finish	Item No.
710 mm (28")	polished chrome	635.61.275
	black semi-gloss	635.61.375
	black textured	635.61.377
	brushed steel	635.61.475
	silver aluminum RAL 9006	635.61.975
876 mm (34 1/2")	polished chrome	635.61.295
	black semi-gloss	635.61.395
	black textured	635.61.397
	brushed steel	635.61.495
	silver aluminum RAL 9006	635.61.995

Packing: 1 set (includes 4 legs, 4 mounting plates, and screws #9x1")