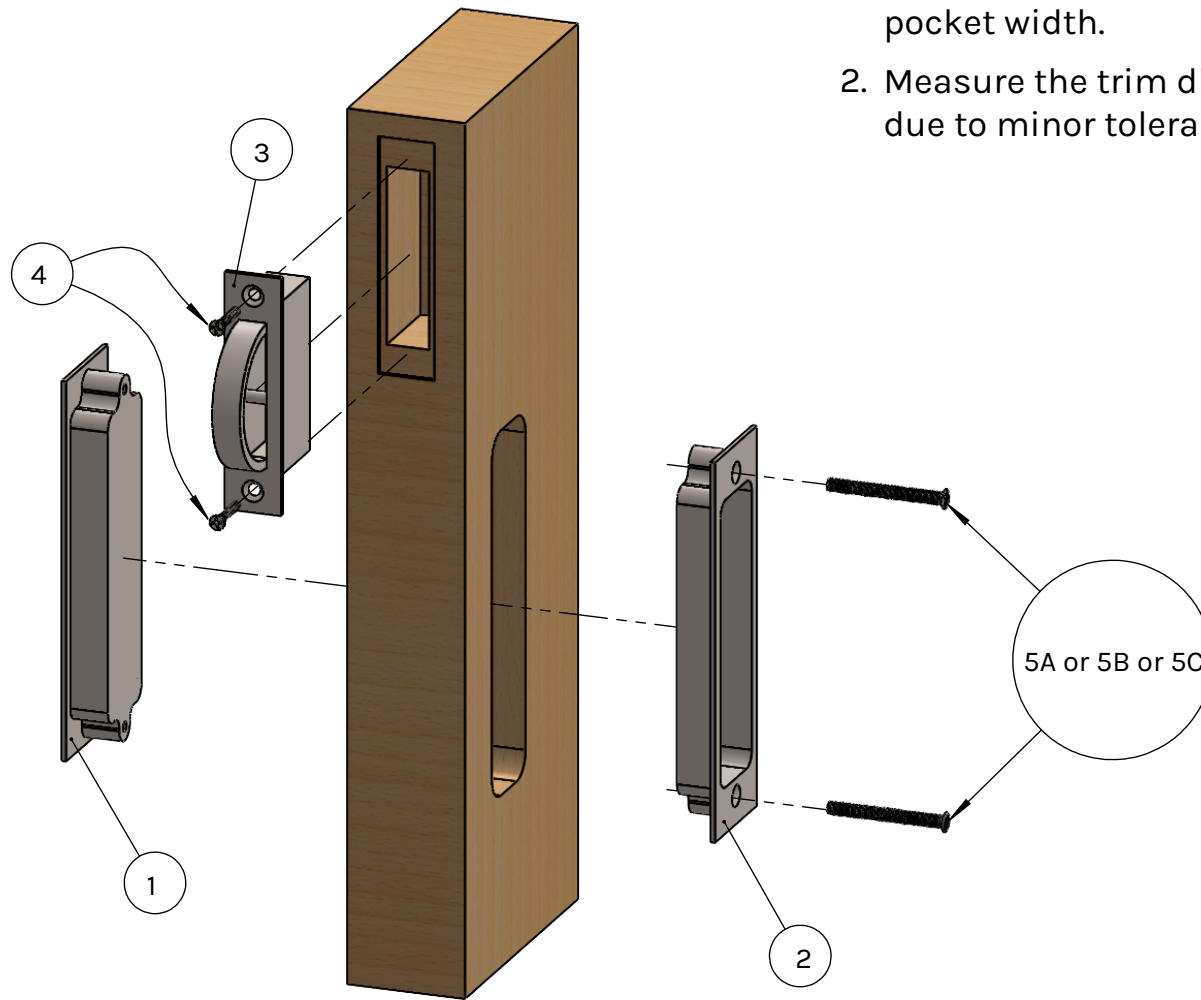


PL-160 Square Dummy Installation Diagram

(Minimum Door Thickness 1-3/8")

SKU: PL160S-00-FD

PL-160 Trim Requires Precise Installation.
Otherwise, It May Not Function Properly.

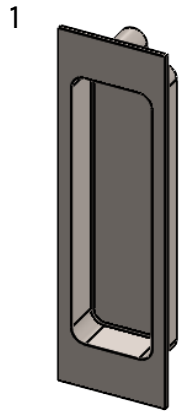


1. Trims are not required to be recessed to accommodate pocket width.
2. Measure the trim dimensions before cutting the door due to minor tolerances in overall dimensions.

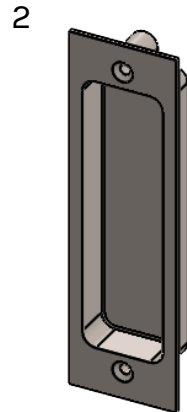


linnea-home.com
(800) 219-2366

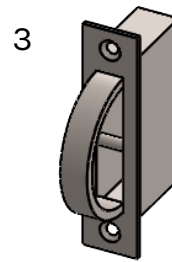
Component List



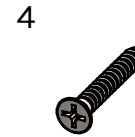
**Dummy
Outside Trim**
PLD160ST-O
(Needs 1)



**Dummy
Inside Trim**
PLD160ST-I
(Needs 1)



Edge Pull
EP-600
(Needs 1)



Wood Screw
#8 X 3/4"
(Needs 2)



Machine Screw
5A: PL-OVSCR36
5B: PL-OVSCR40
5C: PL-OVSCR42



linnea.

linnea-home.com
(800) 219-2366