



SLAL-250-PD

Aluminum Sliding Door Hardware — Pocket Door

PRODUCT CUT SHEET

PROJECT:

SUBMITTED BY:

DATE:

NOTES:

Top Mount Track System



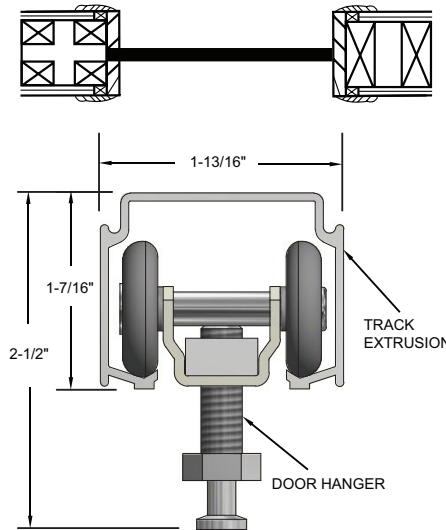
- Commercial Grade for 1 $\frac{3}{8}$ " to 1 $\frac{3}{4}$ " Doors
- Max Weight Load: 250 lbs.
- ANSI/BHMA A156.14 Grade 1 Certified to 100,000 Cycles Including Soft Close Feature
- Hangers with Heavy-Duty Ball Bearing Wheels
- 5-Year Warranty
- Track Comes in 48", 60", 72", 96" and 144" Lengths
- Order Two Sets for Bi-Parting Applications

Complete Kits Include:

(1) Track – Mill Finish

(1) Universal Hardware Pack,
Consists Of:

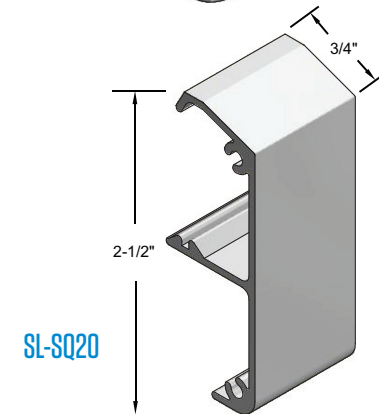
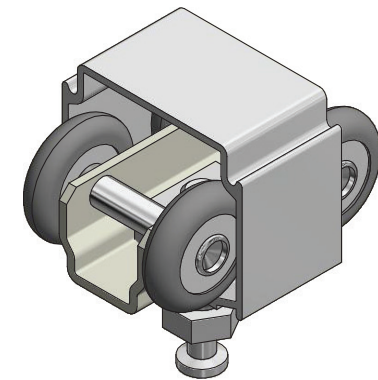
- (2) Ball Bearing Heavy-Duty Hangers
- (2) Snap-In Door Brackets
- (2) In-Track Stops
- (1) Angle Stop
- (1) Bumper Stop
- (1) Door Guide
- Heavy-Duty Floor Guides



OPTIONS:

- Soft Close / Open – Specify "SC"
For Both Directions Order (2) SC
- Wall Mounted Guide SL-WG
- Bottom Channel Guide SL-BCG
- Snap-on Fascias SL-SQ20 –
Clear Anodized

Note: For Door Sizing Refer to Installation Instruction.



NGP-SLI-SLAL-250-PD-PCS-0422-D