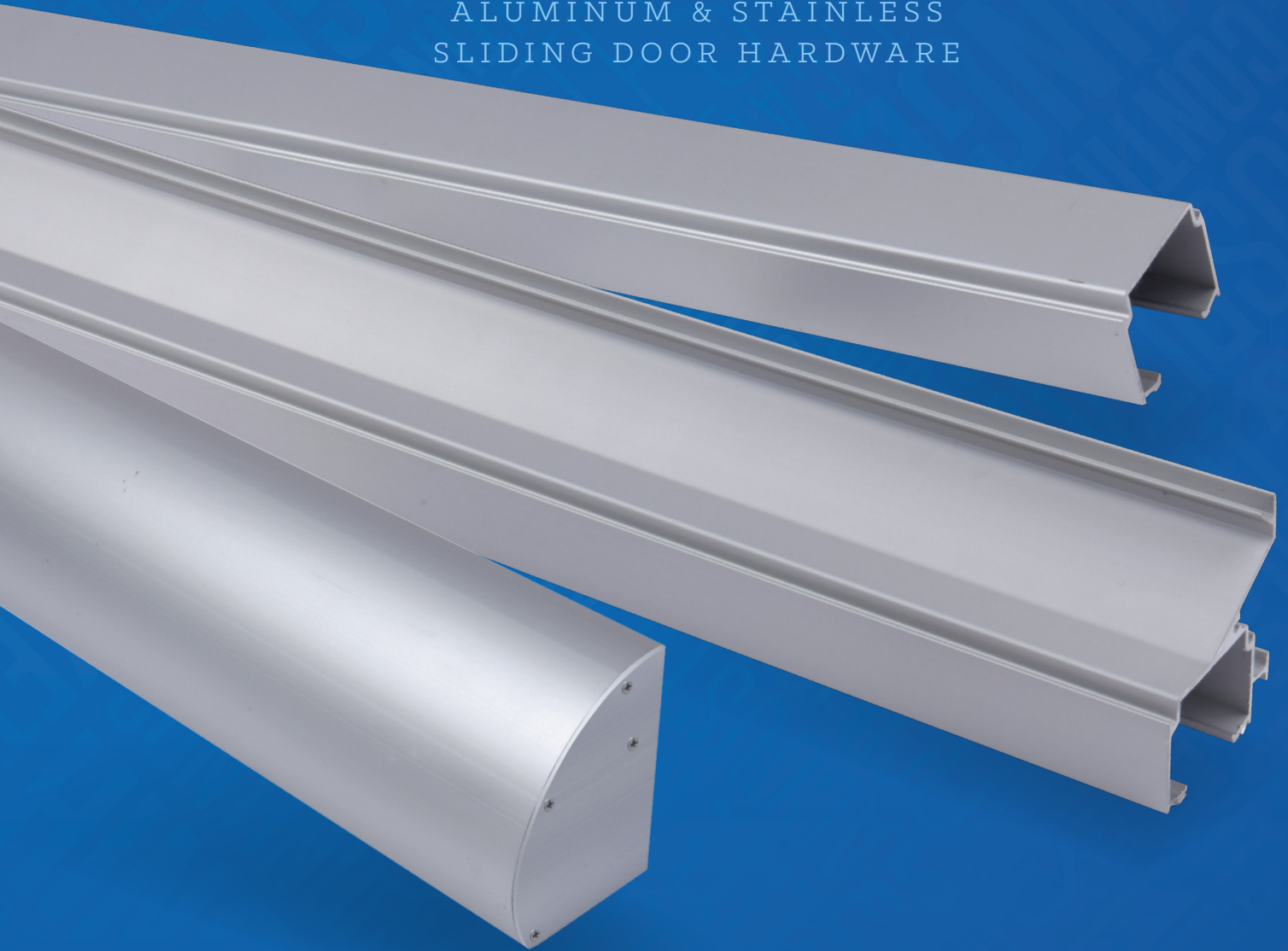




SLIDING

ALUMINUM & STAINLESS
SLIDING DOOR HARDWARE





SLIDING DOOR HARDWARE INDEX:

	Page
Aluminum:	
Bi-Fold Sliding Door Hardware	SL3
Bi-Parting Sliding Door Hardware.....	SL6, SL7, SL8
By-Passing Sliding Door Hardware	SL2, SL4
Side Wall Mount Sliding Door Hardware	SL5
Pocket Door Hardware	SL6
Pocket Door Hardware with Frame Kit.....	SL7, SL8

Stainless Steel:

Barn Door Hardware — Side Mount	SL10
Barn Door Hardware — Top Mount.....	SL9

Accessories:

Drywall Spacer for Stainless Steel Track	SL14
Pocket Door Kit-7'-9' Extension Kit.....	SL15
Sliding Door Hardware Accessories.....	SL11, SL12
Soft Close for Aluminum Sliding Door Hardware.....	SL13

NUMERICAL INDEX:

SC.....	SL13	SLAL-75-BF4DR.....	SL3	SLSS1-6.....	SL9
SCBY.....	SL13	SLAL-75-BP.....	SL2	SLSS1-6-SC.....	SL9
SL-BCG.....	SL11	SLAL-250-BP-2DR.....	SL4	SLSS1-8.....	SL9
SL-RD.....	SL5	SLAL-250-BP-4DR.....	SL4	SLSS1-8-SC.....	SL9
SL-SQ18.....	SL5	SLAL-250-PD.....	SL6	SLSS2-6.....	SL10
SL-SQ20.....	SL4, SL6	SLAL-250-PDKIT.....	SL7, SL8	SLSS2-6-SC.....	SL10
SL-WG.....	SL11	SLAL-250-SW.....	SL5	SLSS2-8.....	SL10
SLAL EXT KIT.....	SL15	SLSS-FG.....	SL11	SLSS2-8-SC.....	SL10
SLAL EXT KIT 48"DR.....	SL15	SLSS-DWS-6.....	SL14	SWBP-BRKT.....	SL12
SLAL-75-BF2DR.....	SL3	SLSS-DWS-8.....	SL14		

RATING SYMBOLS LEGEND



ANSI/BHMA CERTIFIED. Certified sliding door hardware complies with American National Standard for Sliding and Folding Door Hardware ANSI/BHMA A156.14, and is listed in the BHMA Certified Products Directory.

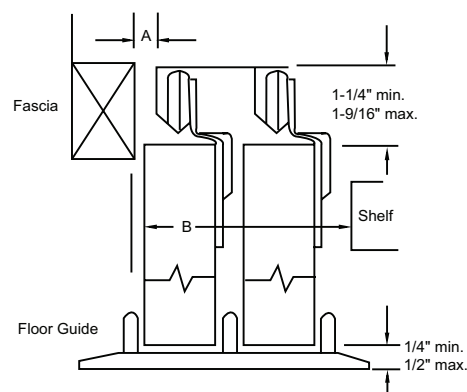
BY-PASS

SLIDING DOOR HARDWARE

ALUMINUM SIDE MOUNT TRACK SYSTEM

- Designed for Multi-family Applications
- Up to 1 $\frac{3}{8}$ " Doors
- Max Weight Load 75 lbs.
- 5-year Warranty

SKU	TRACK LENGTH
SLAL-75-BP-48	48"
SLAL-75-BP-60	60"
SLAL-75-BP-72	72"
SLAL-75-BP-96	96"



DOOR THICKNESS	3/4"	1 3/8"
DIMENSION A	0"	7/8"
DIMENSION B	2 3/4"	4"

Complete Kits Include:

- (1) Track
- (1) Floor Guide With Steel Bracket
- (2) Front Hangers
- (2) Back Hangers
- (2) Brass Pulls
- (2) Chrome Pulls

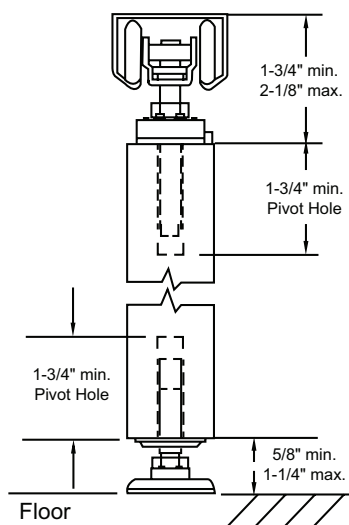


BI-FOLD

SLIDING DOOR HARDWARE

ALUMINUM TOP MOUNT TRACK SYSTEM

- Designed for Multi-family Applications
- 1 $\frac{3}{8}$ " To 1 $\frac{3}{4}$ " Doors
- Max Weight Load 75 lbs.
- 5-year Warranty



TWO DOOR SYSTEMS

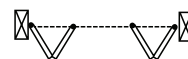


SKU	TRACK LENGTH
SLAL-75-BF2DR-36	36"
SLAL-75-BF2DR-48	48"

Two Door Complete Kits Include:

- | | |
|------------------|-------------------|
| (1) Track | (1) Aligner |
| (1) Top Pivot | (1) Wood Knob |
| (1) Bottom Pivot | (4) Brass Hinges |
| (1) Roller | (4) Chrome Hinges |
| (1) Snugger | |

FOUR DOOR SYSTEMS



SKU	TRACK LENGTH
SLAL-75-BF4DR-60	60"
SLAL-75-BF4DR-72	72"
SLAL-75-BF4DR-96	96"

Four Door Complete Kits Include:

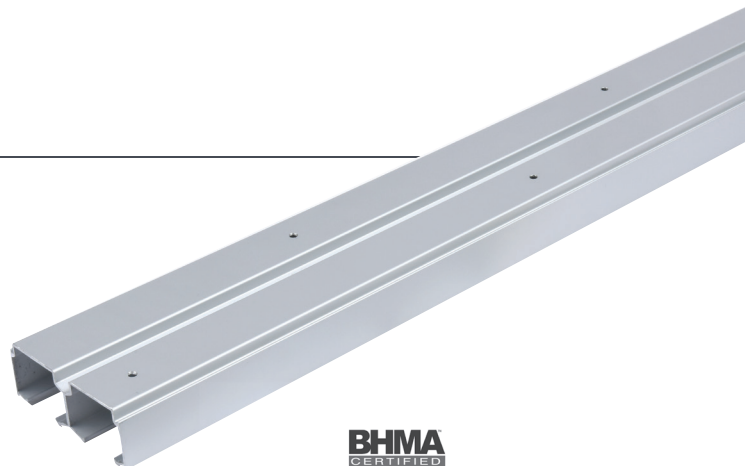
- | | |
|-------------------|-------------------|
| (1) Track | (2) Aligners |
| (2) Top Pivots | (2) Wood Knobs |
| (2) Bottom Pivots | (8) Brass Hinges |
| (2) Rollers | (8) Chrome Hinges |
| (2) Snuggers | |

BY-PASS

SLIDING DOOR HARDWARE

ALUMINUM TOP MOUNT TRACK SYSTEM

- ▶ Commercial Grade for 1 $\frac{3}{8}$ " To 1 $\frac{3}{4}$ " Doors
- ▶ Max Weight Load 250 lbs.
- ▶ ANSI/BHMA A156.14 Grade 1 Certified to 100,000 Cycles Including Soft Close Feature
- ▶ Hangers with Heavy Duty Ball Bearing Wheels
- ▶ 5-Year Warranty



TWO DOOR SYSTEMS

SKU	TRACK LENGTH
SLAL-250-BP-2DR-48	48"
SLAL-250-BP-2DR-60	60"
SLAL-250-BP-2DR-72	72"
SLAL-250-BP-2DR-96	96"
SLAL-250-BP-2DR-144	144"

Complete Kits Include:

- (1) Track – Mill Finish
- (2) Universal Hardware Packs,
Each Consist Of:
 - (2) Ball Bearing Heavy Duty Hangers
 - (2) Snap-In Door Brackets
 - (2) In-Track Stops
 - (1) Angle Stop
 - (1) Bumper Stop
 - (1) Door Guide
 - Heavy Duty Floor Guides

FOUR DOOR SYSTEMS

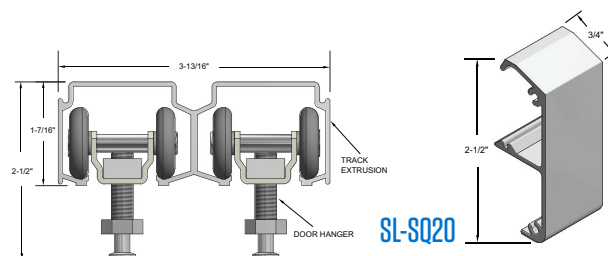
SKU	TRACK LENGTH
SLAL-250-BP-4DR-48	48"
SLAL-250-BP-4DR-60	60"
SLAL-250-BP-4DR-72	72"
SLAL-250-BP-4DR-96	96"
SLAL-250-BP-4DR-144	144"

Complete Kits Include:

- (1) Track – Mill Finish
- (4) Universal Hardware Packs,
Each Consist Of:
 - (2) Ball Bearing Heavy Duty Hangers
 - (2) Snap-In Door Brackets
 - (2) In-Track Stops
 - (1) Angle Stop
 - (1) Bumper Stop
 - (1) Door Guide
 - Heavy Duty Floor Guides

OPTIONS:

- ▶ Soft Close / Open – Specify "SCBY"
For Both Directions Order (2) Sets SCBY
- ▶ Bottom Channel Guide SL-BCG (Page SL10)
- ▶ Snap-On Fascia (SL-SQ20) – Clear Anodized –
Shown Right
- ▶ Sidewall Mount Brackets SWBP-BRKT (Page SL10)



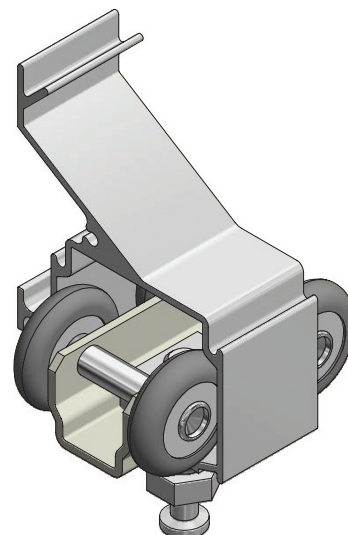
SIDE WALL MOUNT

SLIDING DOOR HARDWARE

ALUMINUM TOP MOUNT TRACK SYSTEM

- Commercial Grade for 1 $\frac{3}{8}$ " To 1 $\frac{3}{4}$ " Doors
- Max Weight Load 250 lbs.
- ANSI/BHMA A156.14 Grade 1 Certified to 100,000 Cycles Including Soft Close Feature
- Hangers with Heavy Duty Ball Bearing Wheels
- $\frac{3}{8}$ " Clearance Between Wall and Door on 1 $\frac{3}{4}$ " Thick Doors
- 5-year Warranty

SKU	TRACK LENGTH
SLAL-250-SW-48	48"
SLAL-250-SW-60	60"
SLAL-250-SW-72	72"
SLAL-250-SW-96	96"
SLAL-250-SW-144	144"

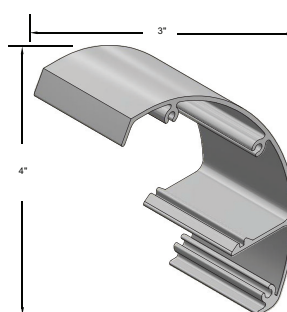
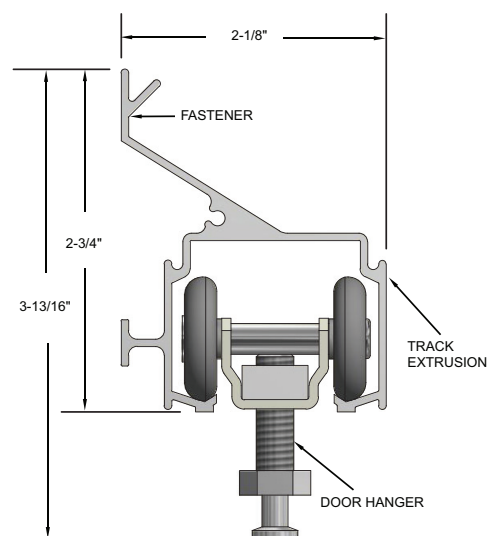


Complete Kits Include:

- (1) Track – Mill Finish
- (1) Universal Hardware Pack, Consists Of:
 - (2) Ball Bearing Heavy Duty Hangers
 - (2) Snap-In Door Brackets
 - (2) In-Track Stops
 - (1) Angle Stop
 - (1) Bumper Stop
 - (1) Door Guide
 - Heavy Duty Floor Guides

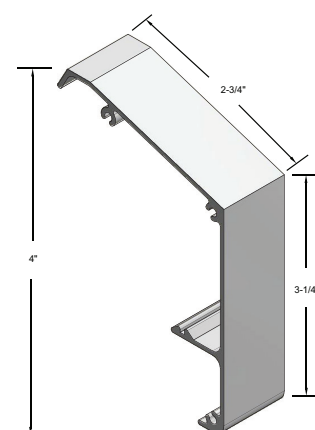
OPTIONS:

- Soft Close / Open – Specify "SC" For Both Directions Order SCBY
- Wall Mounted Guide SL-WG – included in Universal Hardware Pack (page SL10)
- Bottom Channel Guide SL-BCG (page SL10)
- Snap-on Fascias – Clear Anodized – Shown Right



SL-RD

Includes End Caps



SL-SQ18

POCKET DOOR

SLIDING DOOR HARDWARE

ALUMINUM TOP MOUNT TRACK SYSTEM

- ▶ Commercial Grade for 1⅜" To 1¾" Doors
- ▶ Max Weight Load 250 lbs.
- ▶ ANSI/BHMA A156.14 Grade 1 Certified to 100,000 Cycles Including Soft Close Feature
- ▶ Hangers with Heavy Duty Ball Bearing Wheels
- ▶ 5-Year Warranty

SKU	TRACK LENGTH
SLAL-250-PD-48	48"
SLAL-250-PD-60	60"
SLAL-250-PD-72	72"
SLAL-250-PD-96	96"
SLAL-250-PD-144	144"

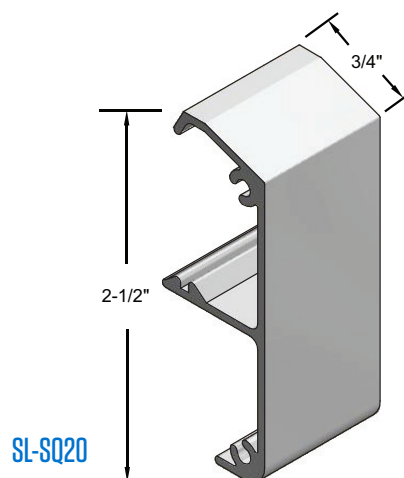
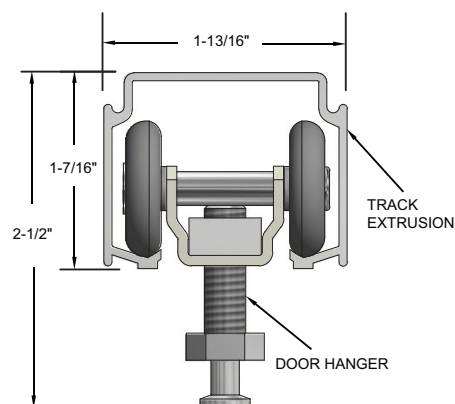
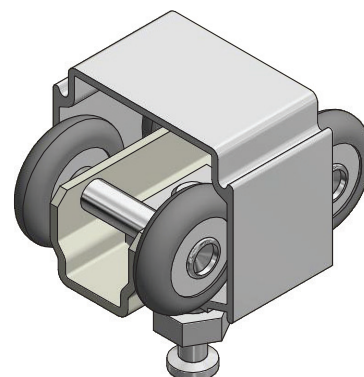
Order two sets for Bi-Parting applications

Complete Kits Include:

- (1) Track – Mill Finish
- (1) Universal Hardware Pack, Consists Of:
 - (2) Ball Bearing Heavy Duty Hangers
 - (2) Snap-In Door Brackets
 - (2) In-Track Stops
 - (1) Angle Stop
 - (1) Bumper Stop
 - (1) Door Guide
 - Heavy Duty Floor Guides

OPTIONS:

- ▶ Soft Close / Open – Specify "SC"
For Both Directions Order SCBY
- ▶ Wall Mounted Guide SL-WG (page SL10)
- ▶ Bottom Channel Guide SL-BCG (page SL10)
- ▶ Snap-On Fascia (SL-SQ20) – Clear Anodized – Shown Right



POCKET DOOR

SLIDING DOOR HARDWARE FRAME KIT

ALUMINUM TOP MOUNT TRACK SYSTEM

- Commercial Grade for 1⅜" To 1¾" Doors
- Max Weight Load 250 lbs.
- ANSI/BHMA A156.14 Grade 1 Certified to 100,000 Cycles Including Soft Close Feature
- Hangers with Heavy Duty Ball Bearing Wheels
- 5-year Warranty
- Patent Pending

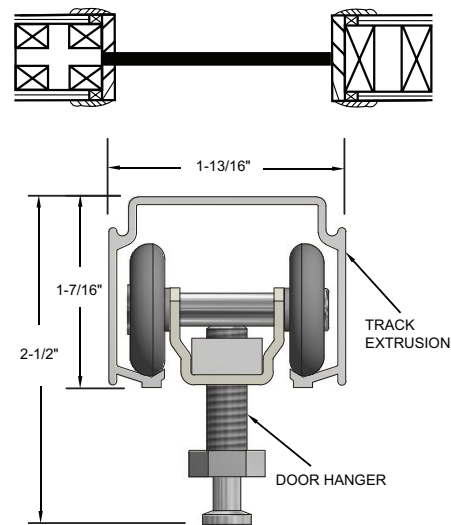
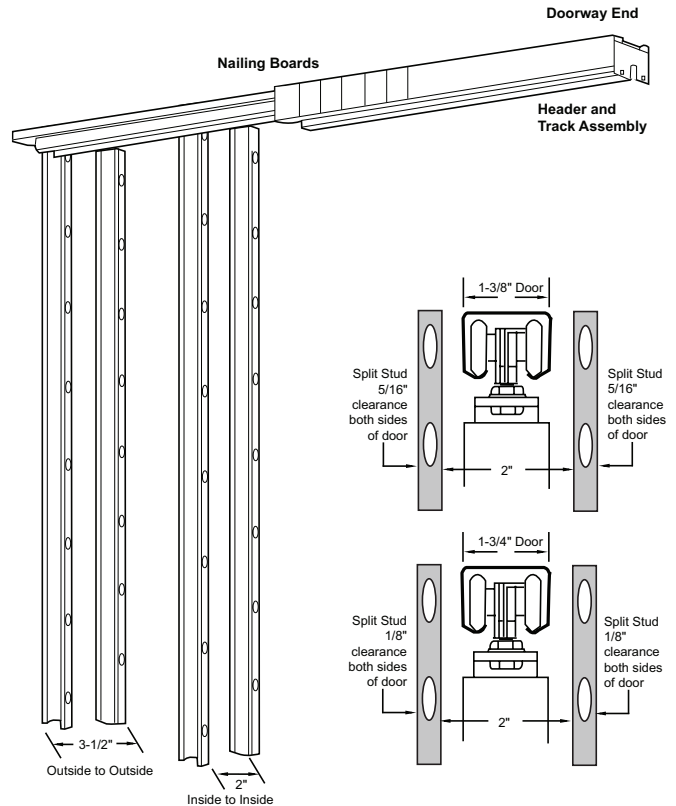


SKU	APPLICATION	FOR UP TO:
SLAL-250-PDKIT	4" Wood or Metal Stud	3/0 x 7/0
SLAL-250-PDKIT-48"DR	4" Wood or Metal Stud	4/0 x 7/0
SLAL-250-PDKIT-6	6" Wood Stud (5½" Header)	3/0 x 7/0
SLAL-250-PDKIT-6-48"	6" Wood Stud (5½" Header)	4/0 x 7/0
SLAL-250-PDKIT-6M	6" Metal Stud (6" Header)	3/0 x 7/0
SLAL-250-PDKIT-6M-48"	6" Metal Stud (6" Header)	4/0 x 7/0

Order two sets for Bi-Parting applications

Complete Kits Include:

- (1) Header Track Assembly
- (1) Universal Hardware Pack, Consists Of:
 - (2) Ball Bearing Heavy Duty Hangers
 - (2) Snap-In Door Brackets
 - (2) In-Track Stops
 - (1) Angle Stop
 - (1) Bumper Stop
 - (1) Door Guide
 - Heavy Duty Floor Guides
- (1) Pocket Frame Kit
 - Jamb Stiffeners
 - (4) 36" Openings
 - (6) 48" Openings
 - Floor Brackets
 - (2) 36" Openings
 - (3) 48" Openings
 - (1) End Bracket



OPTIONS:

- Soft Close / Open – Specify "SC"
For Both Directions Order SCBY
- Wall Mounted Bottom Guide SL-WG
- Bottom Channel Guide SL-BCG (page SL10)

POCKET DOOR

SLIDING DOOR HARDWARE FRAME KIT FOR UP TO 9/0 DOORS

ALUMINUM TOP MOUNT TRACK SYSTEM

- ▶ Commercial Grade for 1⅜" To 1¾" Doors
- ▶ Max Weight Load 250 lbs.
- ▶ ANSI/BHMA A156.14 Grade 1 Certified to 100,000 Cycles Including Soft Close Feature
- ▶ Hangers with Heavy Duty Ball Bearing Wheels
- ▶ 5-year Warranty
- ▶ Patent Pending

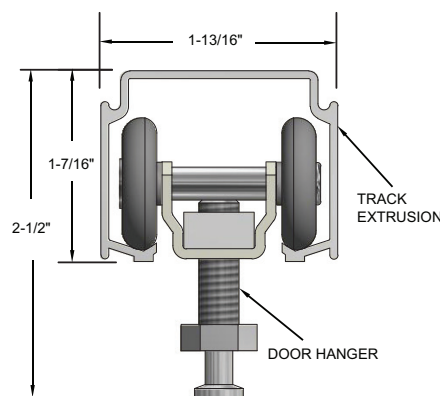
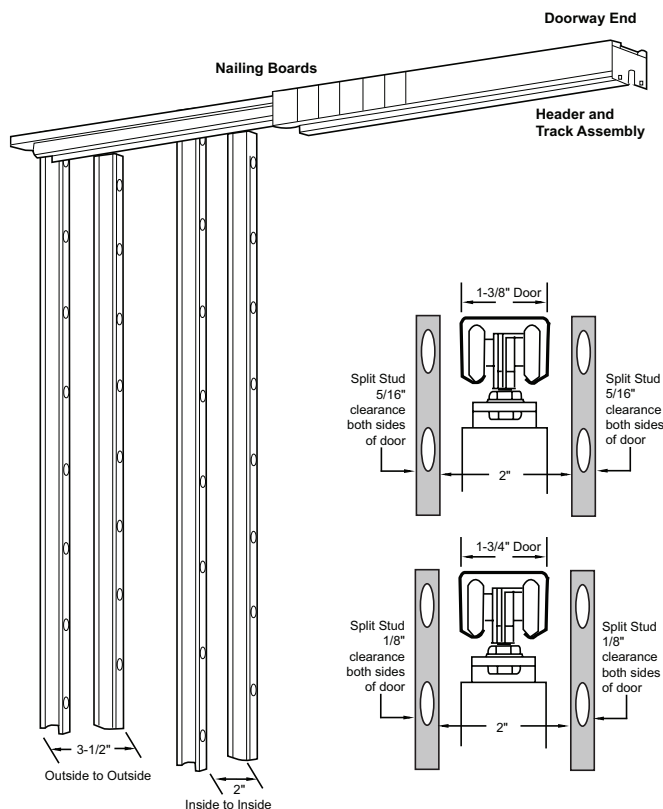


SKU	APPLICATION	FOR UP TO:
SLAL-250-PDKIT-EXT	4" Wood or Metal Stud	3/0 x 9/0
SLAL-250-PDKT-EXT-48	4" Wood or Metal Stud	4/0 x 9/0
SLAL-250-PDKIT-6-EXT	6" Wood Stud (5½" Header)	3/0 x 9/0
SLAL-250-PDK-6-EXT48"	6" Wood Stud (5½" Header)	4/0 x 9/0
SLAL-250-PDKT-6M-EXT	6" Metal Stud (6" Header)	3/0 x 9/0
SLAL-250-PK-6M-EXT48	6" Metal Stud (6" Header)	4/0 x 9/0

Order two sets for Bi-Parting applications

Complete Kits Include:

- (1) Header Track Assembly
- (1) Universal Hardware Pack, Consists Of:
 - (2) Ball Bearing Heavy Duty Hangers
 - (2) Snap-In Door Brackets
 - (2) In-Track Stops
 - (1) Angle Stop
 - (1) Bumper Stop
 - (1) Door Guide
 - Heavy Duty Floor Guides
- (1) Pocket Frame Kit
 - Jamb Stiffeners
 - (4) 36" Openings
 - (6) 48" Openings
 - (4) Jamb Stiffener Extensions
 - (4) Jamb Splice Brackets
 - Floor Brackets
 - (2) 36" Openings
 - (3) 48" Openings
 - (1) End Bracket



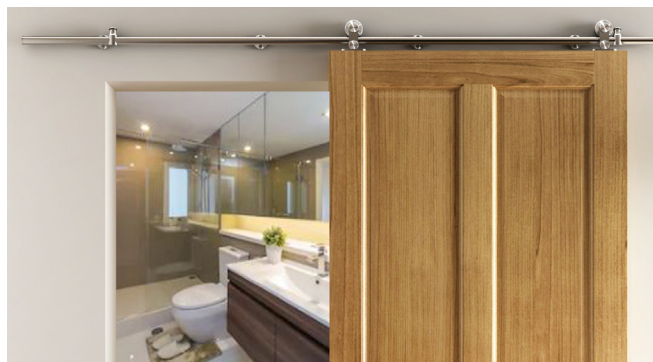
OPTIONS:

- ▶ Soft Close / Open – Specify “SC”
For Both Directions Order SCBY
- ▶ Wall Mounted Bottom Guide SL-WG
- ▶ Bottom Channel Guide SL-BCG (page SL10)

BARN DOOR TOP MOUNT

SLIDING DOOR HARDWARE

- ▶ Fits 1" To 2" Thick Door Panel
- ▶ Brushed Stainless Steel 304
- ▶ Side Wall Mount
- ▶ Nylon Coated Stainless Steel Wheels for Smooth Operation
- ▶ Max Weight Load 220 lbs.
- ▶ ANSI/BHMA A156.14 Grade 1 Certified to 100,000 Cycles Including Soft Close Feature
- ▶ 5 year Warranty
- ▶ Order Two Sets for Bi-parting Applications



STAINLESS STEEL TOP MOUNT ROUND TRACK SYSTEM

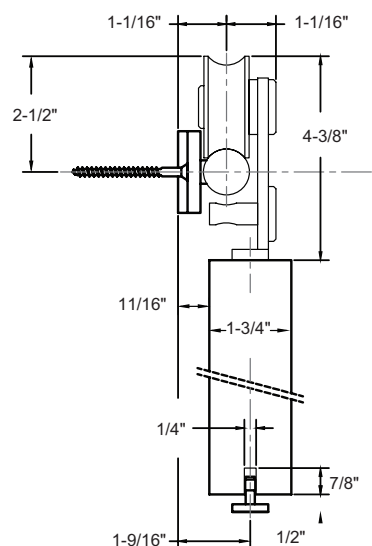
SKU	TRACK LENGTH
SLSS1-6	78 3/4"
SLSS1-8	98 7/16"

Complete Kits Include:

- | | |
|-------------|-----------------|
| (1) Track | (2) Door Stops |
| (2) Hangers | (1) Floor Guide |

SLSS1-6 includes: (5) Wall Attachments

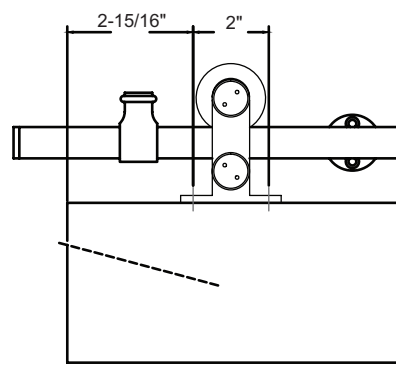
SLSS1-8 includes: (6) Wall Attachments



STAINLESS STEEL TOP MOUNT ROUND TRACK SYSTEM (WITH SOFT CLOSE)

SKU	TRACK LENGTH
SLSS1-6-SC*	78 3/4"
SLSS1-8-SC*	98 7/16"

* Soft Close / Open Hardware is Included for Both Directions in Addition to the SLSS1-6 and SLSS1-8 Complete Kit Contents



BARN DOOR SIDE MOUNT

SLIDING DOOR HARDWARE

- ▶ Fits 1 $\frac{3}{8}$ " To 1 $\frac{3}{4}$ " Thick Door Panel
- ▶ Brushed Stainless Steel 304
- ▶ Side Wall Mount
- ▶ Nylon Coated Stainless Steel Wheels for Smooth Operation
- ▶ Max Weight Load 220 lbs.
- ▶ ANSI/BHMA A156.14 Grade 1 Certified to 100,000 Cycles Including Soft Close Feature
- ▶ 5 year Warranty
- ▶ Order Two Sets for Bi-parting Applications



STAINLESS STEEL SIDE MOUNT ROUND TRACK SYSTEM

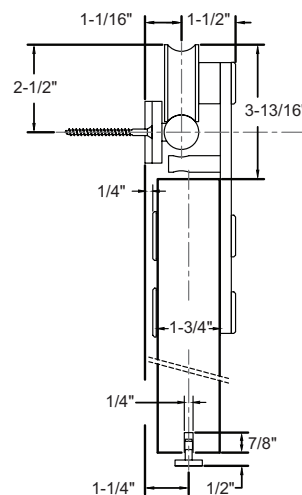
SKU	TRACK LENGTH
SLSS2-6	78 $\frac{3}{4}$ "
SLSS2-8	98 $\frac{7}{16}$ "

Complete Kits Include:

- | | |
|-------------|-----------------|
| (1) Track | (2) Door Stops |
| (2) Hangers | (1) Floor Guide |

SLSS2-6 includes: (5) Wall Attachments

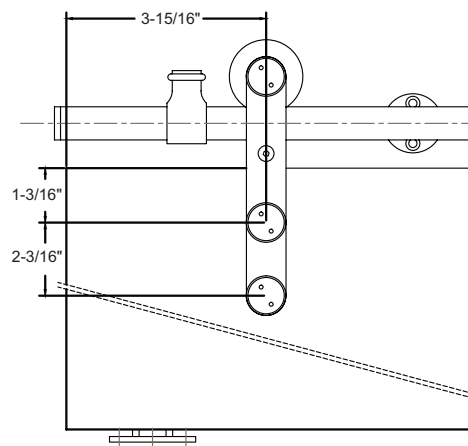
SLSS2-8 includes: (6) Wall Attachments



STAINLESS STEEL SIDE MOUNT ROUND TRACK SYSTEM (WITH SOFT CLOSE)

SKU	TRACK LENGTH
SLSS2-6-SC*	78 $\frac{3}{4}$ "
SLSS2-8-SC*	98 $\frac{7}{16}$ "

* Soft Close / Open Hardware is Included for Both Directions in Addition to the SLSS2-6 and SLSS2-8 Complete Kit Contents



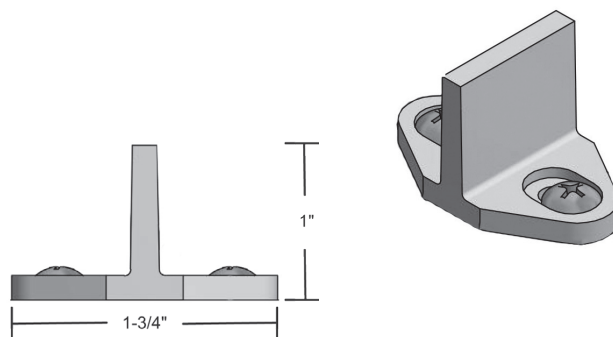
ACCESSORIES

SLIDING DOOR HARDWARE

FLOOR GUIDE

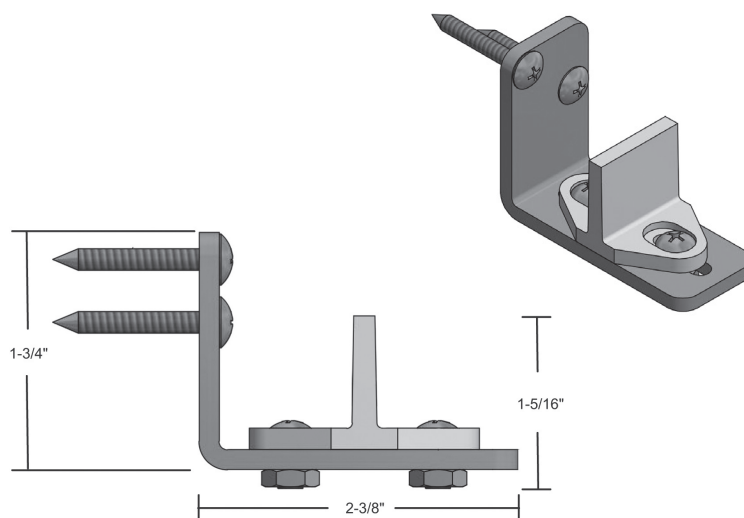
- Furnished Standard with Stainless Steel and Commercial Grade Aluminum Sliding Door Hardware Sets

SKU	MATERIAL/FINISH
SLSS-FG	Aluminum Dark Bronze Powder Coat



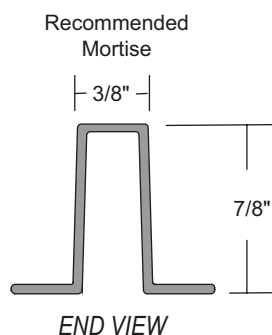
WALL MOUNTED GUIDE

SKU	MATERIAL/FINISH
SL-WG	Aluminum Floor Guide on Steel Bracket Dark Bronze Powder Coat #8-18 x 1-1/4" Truss Head Self-Tapping Screws



BOTTOM CHANNEL GUIDE

SKU	MATERIAL/LENGTH/COLOR
SL-BCG	Polypropylene 60" Dark Brown



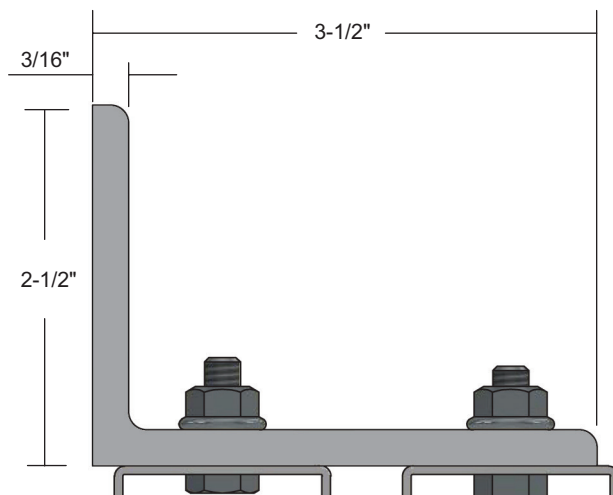
ACCESSORIES

SLIDING DOOR HARDWARE

SIDEWALL MOUNT BY-PASS BRACKET

SKU	MATERIAL/LENGTH/COLOR
SWBP-BRKT	$\frac{3}{16}$ " Steel Gray Finish

Use 3" from each end and not more than 24" on center

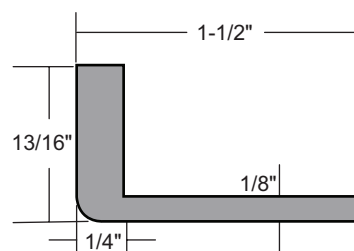


Fasteners not furnished

SIDEWALL MOUNT LOW-PROFILE BRACKET

SKU	MATERIAL/LENGTH/COLOR
SWPD-LPBRKT	$1\frac{5}{8}$ " Length Mill Finish Aluminum

Use 3" from each end and not more than 24" on center



SOFT CLOSE

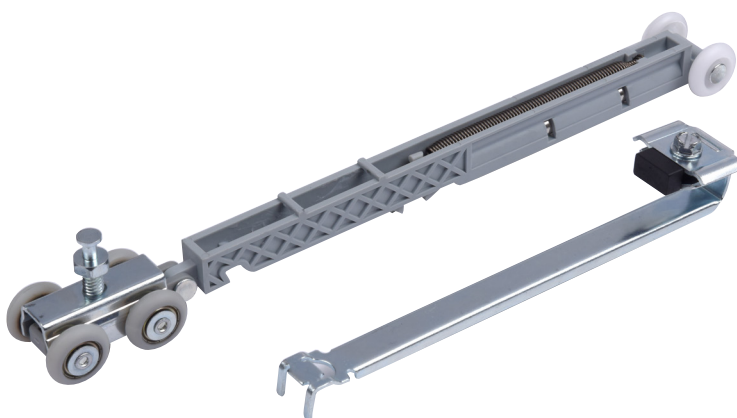
FOR ALUMINUM SLIDING DOOR HARDWARE

FEATURES:

SC

For Single Sliding Aluminum Hardware Sets

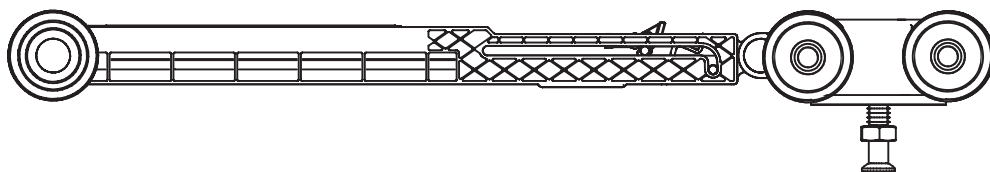
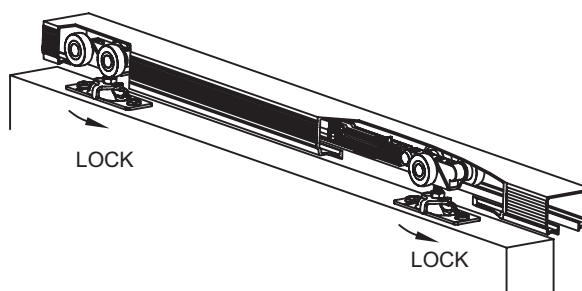
- Designed for Doors 120 lbs. – 150 lbs.
- Minimum Door Width When Using One Soft Close Device on a Single Door is 16"
- Minimum Door Width When Using Two Soft Close Devices for Soft Close Both Directions on a Single Door is 31"
- Slows Travel of the Door to Softly Close
- Soft Close for Single Sliding Aluminum Hardware Sets
- For Both Directions Order SCBY



SCBY

Set of (2) Soft Close

- Designed for Doors 120 lbs. – 150 lbs.
- Minimum Door Width When Using One Soft Close Device on a Single Door is 16"
- Minimum Door Width When Using Two Soft Close Devices for Soft Close Both Directions on a Single Door is 31"
- Slows Travel of the Door to Softly Close
- For By-Pass and Bi-Parting Sliding Aluminum Hardware Sets. For Both Directions Order (2) Sets SCBY
- For Soft Close Both Directions on Sidewall and Pocket Door Applications



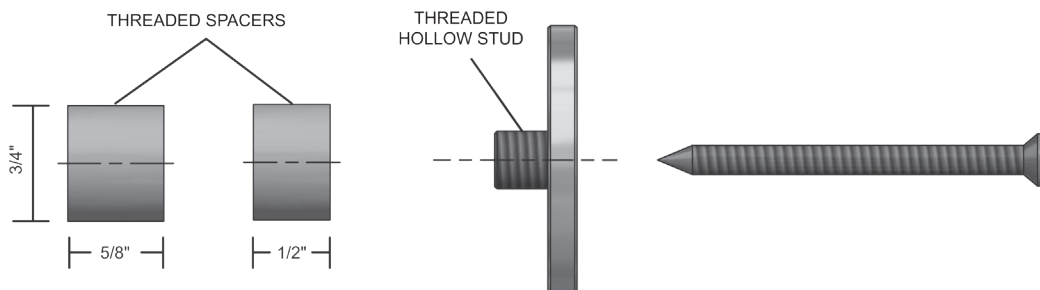
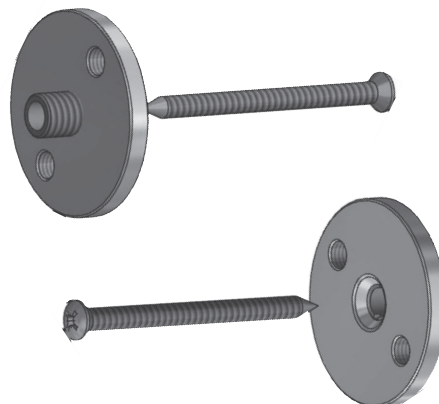
DRYWALL SPACER

FOR STAINLESS STEEL TRACK

FEATURES:

- ▶ Spacer Kits Include Two Sizes of Spacers
Allowing Installation Directly to the Blocking
Behind the Drywall
- ▶ The Finished Stainless Steel Plate
Accepts Mounting of the SLSS Track

SKU	# OF SPACERS/TRACK LENGTH
SLSS-DWS-6	5 Total Spacers/6' Track
SLSS-DWS-8	6 Total Spacers/8' Track

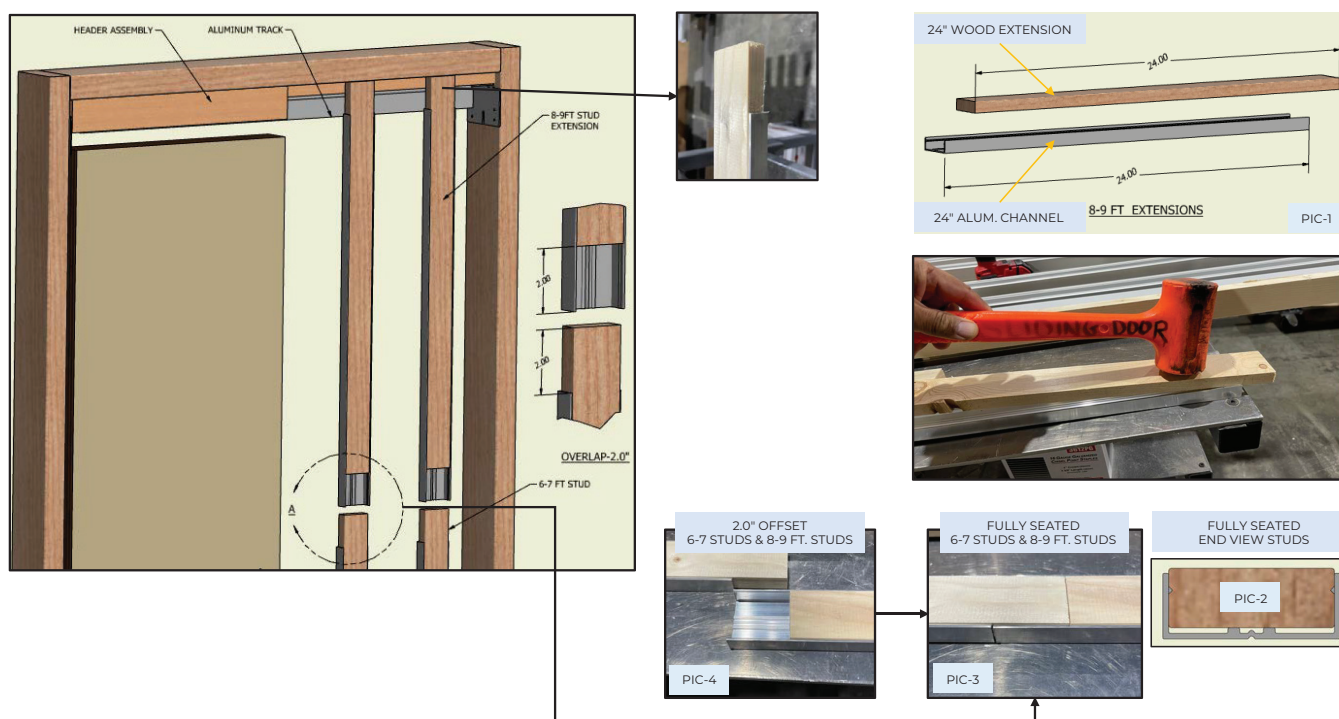


SLAL EXT KIT, SLAL EXT KIT 48"DR

POCKET DOOR KIT-7'-9' EXTENSION KIT

FEATURES:

- ▶ Pocket Door Frame Extension Kits Include:
 - + SLAL EXT KIT: 4 ea. Wood Frame Extensions, 4 ea. Aluminum Frame Extensions
 - + SLAL EXT KIT 48"DR: 6 ea. Wood Frame Extensions, 6 ea. Aluminum Frame Extensions
- ▶ Allows Standard PDKIT to be Extended for Use on Door Opening Heights up to 9'









For the most up-to-date
Sliding Door Hardware
Catalog scan the QR code
or visit ngp.com.



ngp.com
1-800-NGP-RUSH

FAX: (800) 255-7874
QUOTES: quotes@ngp.com

NGP MEMPHIS

4985 East Raines Road
Memphis, TN 38118
orders@ngp.com

NGP VEGAS

4584 Calimesa Street
Las Vegas, NV 89115
vegasorders@ngp.com