



## FULL MORTISE U.L. LISTED SPRING HINGE

**RESIDENTIAL WEIGHT**  
**3 1/2" x 3 1/2"**

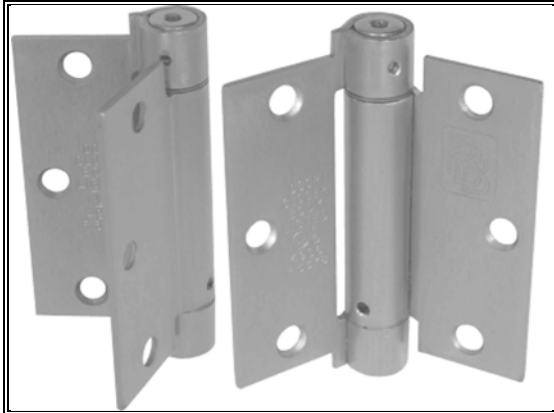
[Installation Instructions](#)

[Reverse Action Installation Instructions](#)

**Templates:**

[RS35](#)

[RSY35](#)



RS81 (ANSI K8107)

Steel-Polished and Plated or Bonderized and Prime Coated for Painting.

•Spring hinge door closer Model K8107 passed a 250,000 cycle UL test in accordance with Underwriters Laboratories for door closers, with or without integral smoke detectors.

•All hinges are ANSI template. 3-1/2" available in square and in 1/4" & 5/8" radius round corners.

•**UL LISTED FOR FIRE DOORS**

**GENERAL PRODUCT INFORMATION:** PBB, Inc. template hinges are manufactured to close tolerances and meet all specifications and requirements set by the American National Standards Institute (ANSI).

**OTHER SPECIFICATIONS:**

Height of Barrel:  
4.00 (+.000/- .015)

Height of Leaf:  
3.50 (+.000/- .015)

Width:  
3.50 ± .015



**HINGE SWAGING:** A standard swaging of our standard weight full mortise hinge when closed to parallel position provides a 1/16" clearance between leaves.

**MATERIAL GAUGE:**  
.100 ± .005

Template screw hole locations for all 3-1/2 x 3-1/2 Full Mortise Template butts are punched to Commercial Standard CS9-65.

SERIES	SIZE	RECOMMENDED MAX DOOR WEIGHT (LBS.)	SPRING HINGE	BUTT HINGE
FOR USE ON 1 3/8" DOOR				
RS81	3 1/2"	40	1	2
	x	70	2	1
	3 1/2"	90	3	-

**3-1/2" STANDARD SCREW SIZE**

FHMS - 10-24 x 1/2"  
FHWS - 10 x 1"

Maximum Door Size - 2'6" x 7'0"

The above quantities are based on 3 hinges per door. Spring hinges are to be used only with bearing hinges. Installation Instructions:

1. Install hinge with adjustment pin up.
2. Close door to adjust spring.
3. Turn adjustment pin 1/4 turn clockwise for each tension setting. Adjust one position at a time until proper tension is obtained. Roll pin is inserted approximately half way at each position to test tension.

4. When proper tension is obtained, insert roll pin completely.

Caution:

For 180° opening, two positions maximum tension.

For 90°, three positions maximum tension.

5. Use of gasket for smoke or sound protection, wind condition or unbalanced air pressure may prevent door from latching. Additional closing power would be required. See installation instruction sheet.

When testing tension, do not open door more than 90°

---

**PACKAGING INFORMATION:**

One hinge per plastic bag, 3 hinges and 1 screw pack per unit carton.

16 unit carton or 48 hinges per master shipping carton.

1 screw pack includes (18) machine screws and (18) wood screws.