



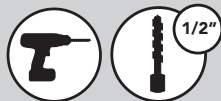
12400 Earl Jones Way
Louisville, KY 40299
rev-a-shelf.com
Customer Service: 800-626-1126



INSTALLATION INSTRUCTIONS

CVRI SERIES WITHOUT DRILL GUIDE

TOOLS REQUIRED:



ESTIMATED ASSEMBLY TIME:

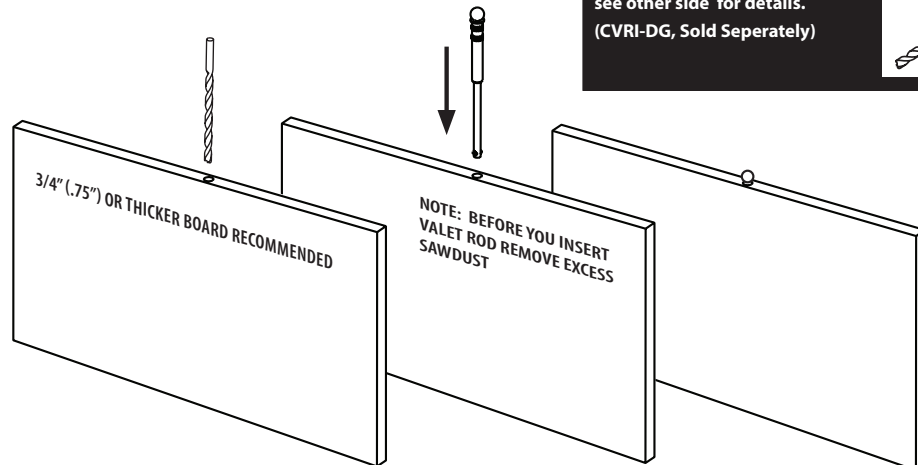
10 MIN

CARE AND MAINTENANCE:

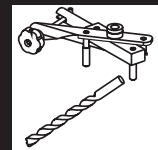
Clean with a damp cloth and wipe parts dry.

1. Using a 1/2" drill bit drill a hole at least 7" deep

2. Insert valet rod



Note: It is highly recommended to use Rev-A-Shelf's drill bit and guide for accurate installation, see other side for details. (CVRI-DG, Sold Separately)



I-CVRI-0417



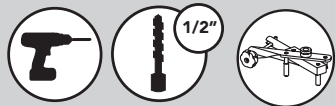
12400 Earl Jones Way
Louisville, KY 40299
rev-a-shelf.com
Customer Service: 800-626-1126



INSTALLATION INSTRUCTIONS

CVRI SERIES WITH DRILL GUIDE

TOOLS REQUIRED:



ESTIMATED ASSEMBLY TIME:

5 MIN

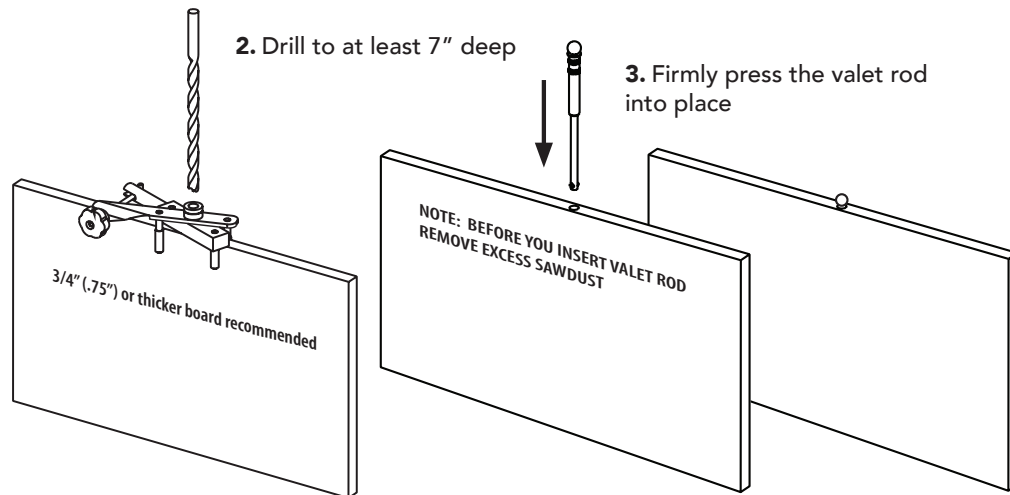
CARE AND MAINTENANCE:

Clean with a damp cloth and wipe parts dry.

1. Clamp drill guide to desired location and tighten

2. Drill to at least 7" deep

3. Firmly press the valet rod into place



I-CVRI-0417