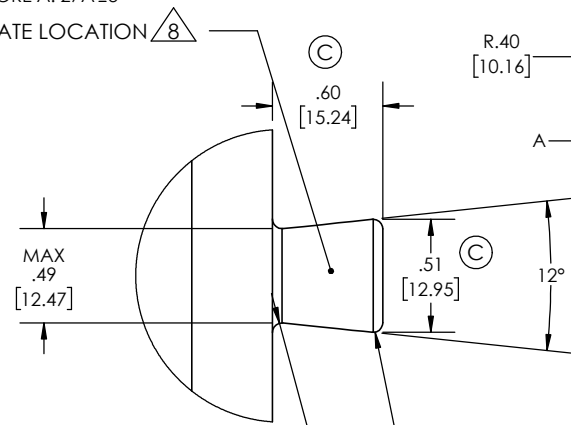
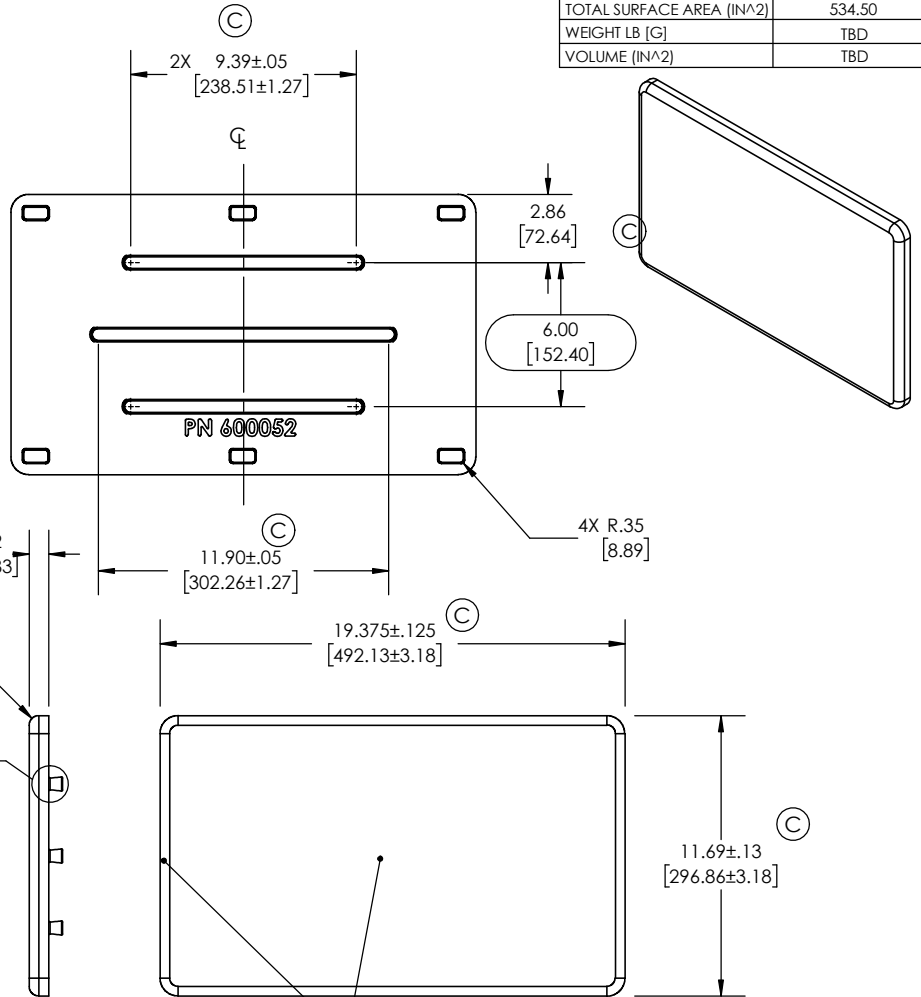


NOTES:

- ALL DIMENSIONS & DETAIL NOT SHOWN ON PRINT WILL BE TAKEN FROM CAD MODELS.
- PART IS AESTHETIC: AESTHETIC DIMENSIONS SHALL NOT AFFECT FIT AND FUNCTION OF PART.
- DIMENSIONS IN BRACKETS [] ARE MILLIMETERS AND FOR REFERENCE ONLY.
- ALL DRAFF TO BE 1.5° UNLESS OTHERWISE SPECIFIED
- UNLESS OTHERWISE SPECIFIED RADII TO BE .030"
- THE FOLLOWING MUST BE APPROVED BY SEACHROME ENGINEERING
 - PRIOR TO TOOLING START:
 - PARTING LINE, MOLD SECTION LINES, GATE AND EJECTOR PIN LOCATIONS.
 - PRIOR TO INITIAL PRODUCTION:
 - GATE REMOVAL, FLASH ALLOWANCE OR REMOVAL, AND FINISH STOCK ALLOWANCE.
 - SINK MARKS AND THER SURFACE DEFECTS.
 - COLOR AND FINAL APPEARANCE.
 - FINISH COMPLIANCE, PARTS MUST BE TESTED AT SEACHROME.
- UNLESS OTHERWISE SPECIFIED:
 - EJECTOR PIN MARKS TO BE FLUSH WITH, TO .005 [0.127] MAX DEPRESSED BELOW SURFACE.
 - MOLD MISMATCH AT PARTING LINE TO BE .0015 [0.038] MAX AND NOT VISIBLE AT "ARMS LENTGH".
 - MAXIMUM FLASH ALLOWED: .0015 [0.038]
 - NO SINK, KNIFE EDGES, OR FLASH PERMISSIBLE ON VISIBLE EXTERIOR SURFACES.
- GATE LOCATION, GATE ALLOWED TO PROTRUDE OUTWARD .012 [0,3 MM] MAX
- PART SURFACE TEXTURE PER S.P.I. MOLD FINISH D3 OR PT-113: Ra 190-230 MICRO INCHES.
- MATERIAL: Polyurethane Closed-Cell
 - COLOR MATCHED: TBD
 - DUROMETER HARDESS TYPE SHORE A: 27A ±3

ATTRIBUTES	
TOTAL SURFACE AREA (IN^2)	534.50
WEIGHT LB [G]	TBD
VOLUME (IN^3)	TBD



FRONT AREA OF PART:
-VISIBLE AREA PER NOTES $\triangle \triangle \triangle$ D

ZONE	REV	ECN NO./DESCRIPTION	DATE	APPROVED
C		Modified Dim. to match production part	8/24/21	J.A.
B		THICKNESS WAS .4 IS .8	7/1/21	J.A.
A		REMOVED MIDDLE RIB	6/18/21	J.A.
-		PRELIMINARY FOR QUOTING	11/12/20	J.A.

Proprietary & Confidential
This drawing and the information contained herein is the property of Seachrome Corporation and shall not be reproduced, copied, or disclosed in whole or in part, or used in manufacturing, or for any other purpose without the written permission of Seachrome Corporation.

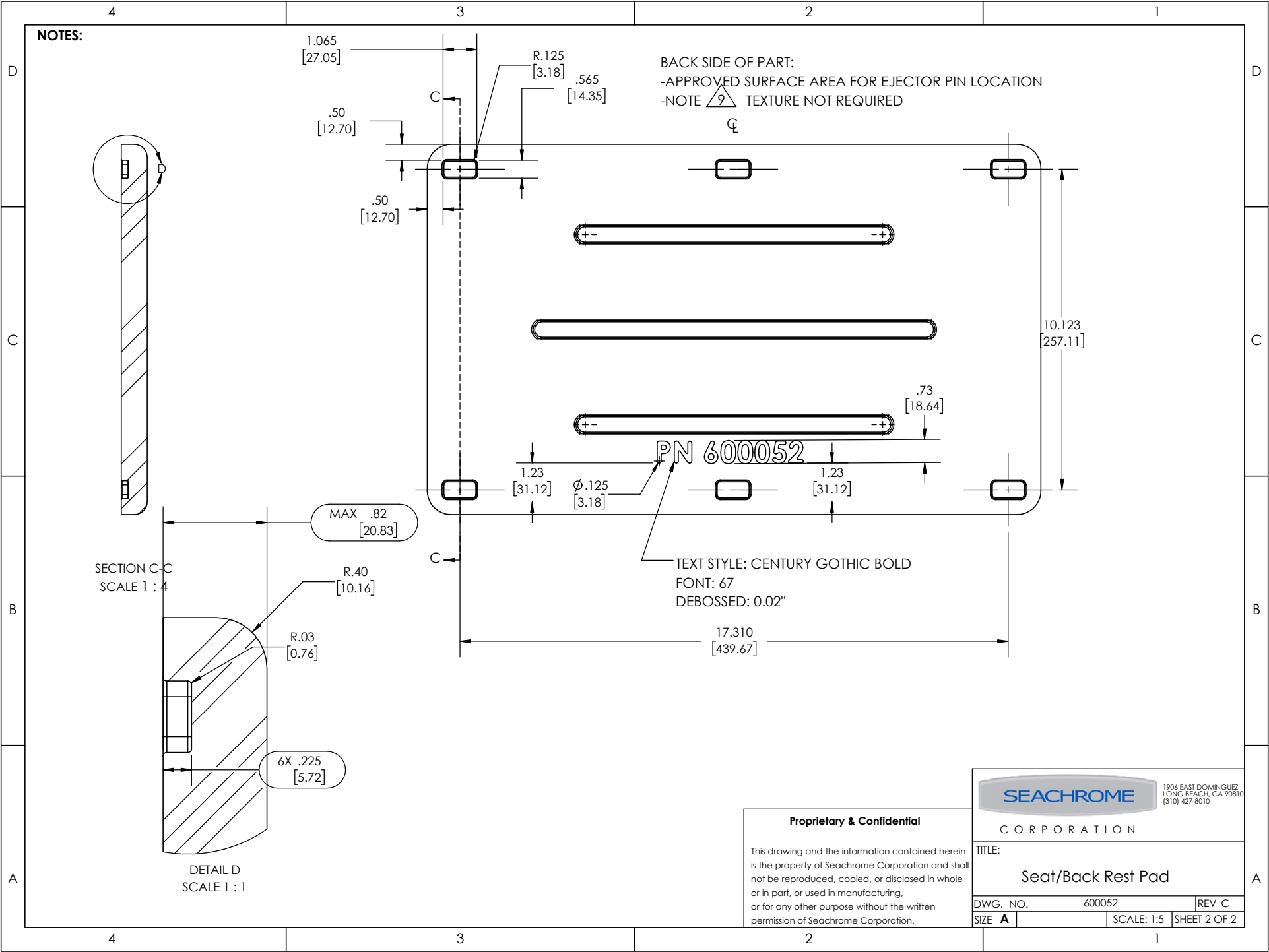
TESTING	-----
ASSEMBLY	-----
POLISHING	-----
MACHINING	-----
TOOLING FIXTURE #	-----

INTERPRET GEOMETRIC TOLERANCING PER: ASME Y14.5-2009
UNLESS OTHERWISE SPECIFIED:
DIMENSIONS ARE IN INCHES [MM]
TOLERANCES: DECIMALS
FRACTIONAL ±1/64 X ±0.1
ANGLES ±3° .XX ±0.05
BEND ± 1° .XXX ±0.03
 \otimes DENOTES CRITICAL DIMENSION
ALL THREADS ARE CRITICAL
REMOVE ALL BURRS & SHARP EDGES
MATERIAL Custom Plastic
FINISH SEE NOTE

-----	-----	-----
NEXT ASSY	USED ON	APPLICATION
DRAWN	J. AMOZOC	11/12/20
CHECKED	J. AMOZOC	11/12/20
ENG APPR.	J. AMOZOC	11/12/20
MFG APPR.	R. CANO	11/12/20
Q.A.	-----	XX/XX/XX



TITLE: Seat/Back Rest Pad	
DWG. NO. 600052	REV C
DO NOT SCALE DRAWING	SCALE: 1:5 SHEET 1 OF 2



Proprietary & Confidential

This drawing and the information contained herein is the property of Seachrome Corporation and shall not be reproduced, copied, or disclosed in whole or in part, or used in manufacturing, or for any other purpose without the written permission of Seachrome Corporation.

SEACHROME		1906 EAST DOMINGUEZ LONG BEACH, CA 90810 (310) 427-8010	
CORPORATION			
TITLE: Seat/Back Rest Pad			
DWG. NO. 600052		REV C	
SIZE A	SCALE: 1:5	SHEET 2 OF 2	