

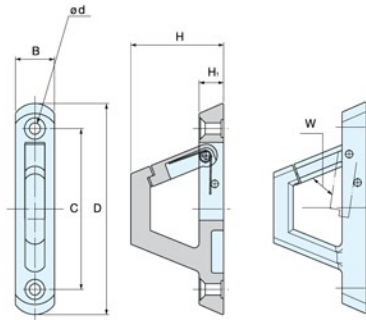
LATCH HOOK



LOAD CAPACITY
20~60 kg
44~132 lbs



EN-K



- Keeps items hooked, ideal for vibration or shock applications.

Item No.	D	C	B	H	H ₁	d	W	Load Capacity (kg)		Weight (g)	Box (pcs)	Carton (pcs)
								Hook	Arm			
EN-K 84	84 (3-5/16")	64	16 (5/8")	38 (1-1/2")	10 (25/64")	4.5, 8.5	Max.10	20 (44 lbs)	10 (22 lbs)	92	10	120
EN-K120	120 (4-23/32")	96	22 (7/8")	54 (2-1/8")	12 (15/32")	5.4, 10.5	Max.20	60 (132 lbs)		280		60

Material	Finish
316 Stainless Steel	Polished