

# EXTENSION HANGER

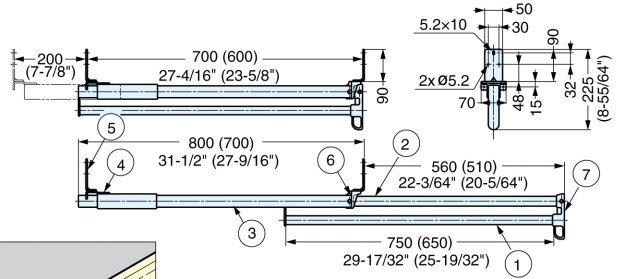
**LOAD CAPACITY**  
20kg  
44lbs

**4.5x20**  
**STEEL**

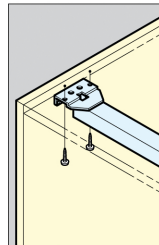
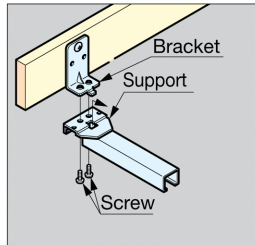
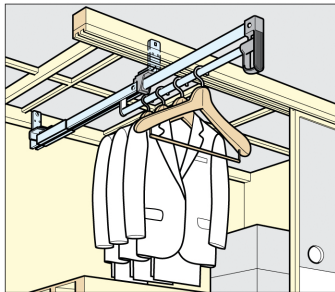
# TE-700, TE-800



- Space-saving, undermount design for deep, narrow spaces.
- Use L-brackets (included) for side-mount.
- 7-7/8" rear support can be adjusted for shorter/longer spaces.
- Includes 3/4" (M4.5 × 20) long screws.



( ):TE700



Installation

No.	Part Name	Material	Finish
①	Hanger Rod	Steel	Chrome
②	Rod Retainer		Brown
③	Retainer		
④	Support		
⑤	Bracket	Plastic	Black
⑥	Cap		
⑦	Pull		

Item No.	Load Capacity (kg)	Weight (g)	Box (pcs)	Carton (pcs)
TE-700	20 (44 lbs)	2400	1	6
TE-800		2700		