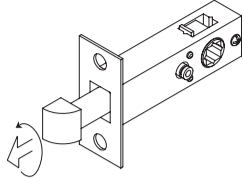


Change Latch Bolt Direction For TL2 Latch

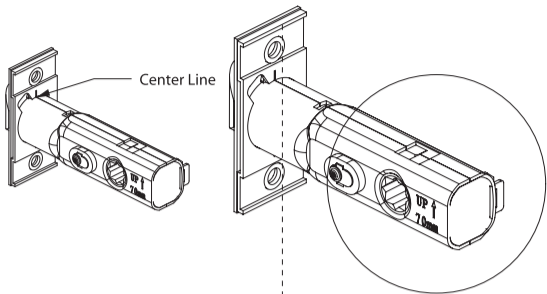
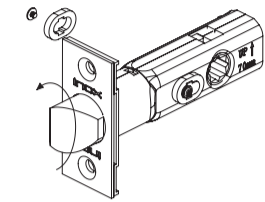
TL2 Latch  
45 degree retraction latch

Take out the latch and turn 180°



Change Latch Bolt Direction For TL4 Latch

TL4 Latch  
28 degree retraction latch

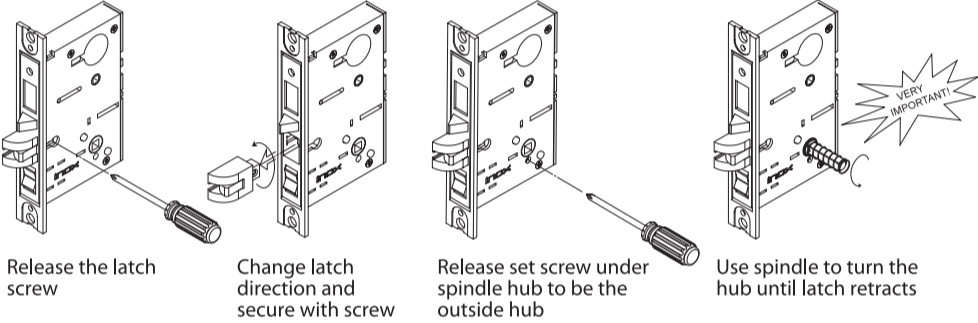


Determine door handing for latch and remove INSIDE washer ( privacy pin side ). Change the latch direction 180° with the faceplate together .  
Note: Be sure to install the latch with faceplate attached to the latch body.

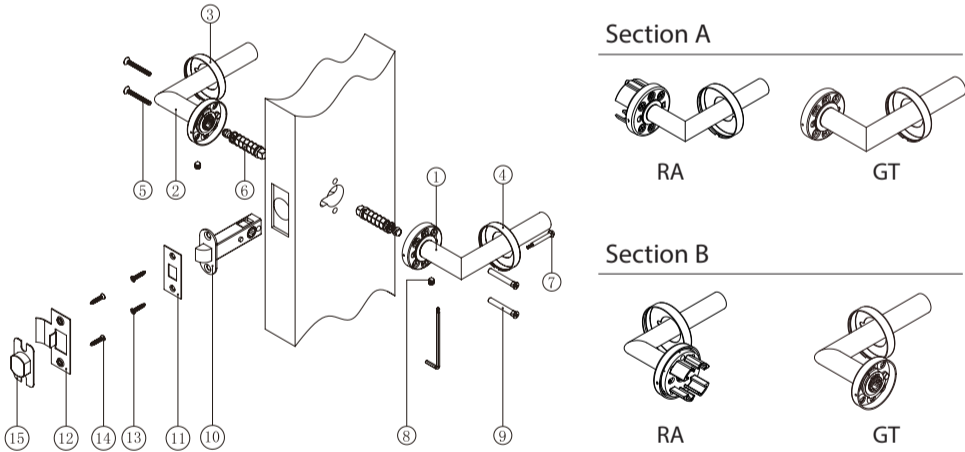
Note: Please ensure the center line on the back of the faceplate meets the center seam of the latch case.

Note: Please ensure the latch has the Arrow facing up.

Change Latch Bolt Direction For MC Mortise Lock



RA/SE/GT/GS Rose with Tubular Latch Parts List:



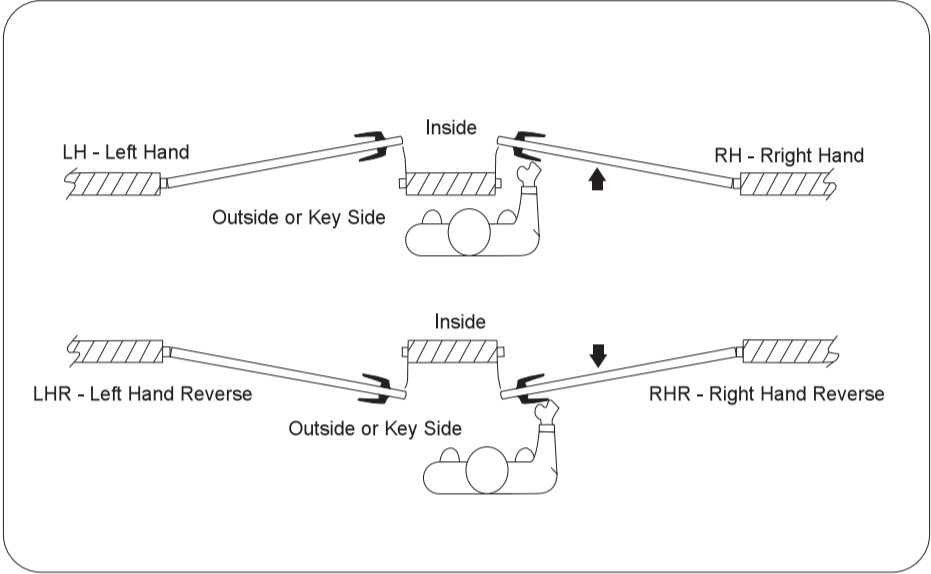
Items	No.	Parts Description	Function				
			Privacy	Passage	Full Dummy	Half Dummy	Half Passage
Leverset Parts	1	Rose Inside w/Lever (Section A)	1 EA	1 EA	1 EA	1 EA	1 EA
	2	Rose Outside w/Lever (Section B)	1 EA	1 EA	1 EA	-	-
	3	Outside Rose Cover	1 EA	1 EA	1 EA	-	-
	4	Inside Rose Cover	1 EA	1 EA	1 EA	1 EA	1 EA
	5	M4 x 1-3/8" (35mm) Machine Screw	2 EA	2 EA	-	-	2 EA
	6	8x1-3/4" (45mm) Spring Spindle	2 EA	2 EA	-	-	1 EA
	-	Dummy Spinle for RA/SE	-	-	2 EA	1 EA	-
	-	#6x1" Wood Screws for RA/SE	-	-	6 EA	3 EA	-
	7	Privacy Pin	1 EA	-	-	-	-
	8	Set Screw	2 EA	2 EA	2 EA	2 EA	1 EA
Locks	9	M4x40mm Bolt Sleeves	2 EA	2 EA	-	-	2 EA
	-	#8x1" Wood Screws	-	-	8 EA	4 EA	-
	10	Tubular Latch	1 EA	1 EA	-	-	1 EA
	11	Tubular Latch Faceplate	1 EA	1 EA	-	-	1 EA
	12	Tubular Latch Striking Plate	1 EA	1 EA	-	-	1 EA
Others	13	8# Screws for Tubular Latch Faceplate	2 EA	2 EA	-	-	2 EA
	14	8# Screws for Tubular Latch Striking Plate	2 EA	2 EA	-	-	2 EA
	15	Tubular Latch Dust Box	1 EA	1 EA	-	-	1 EA
	-	Door Prep Template	1 EA	1 EA	-	-	1 EA
	-	Installation Instruction	1 EA	1 EA	1 EA	1 EA	1 EA

RA/SE/GT/GS/GR/SR  
Installation Instructions

Tubular Latch  
Mortise Lock  
Privacy Bolt

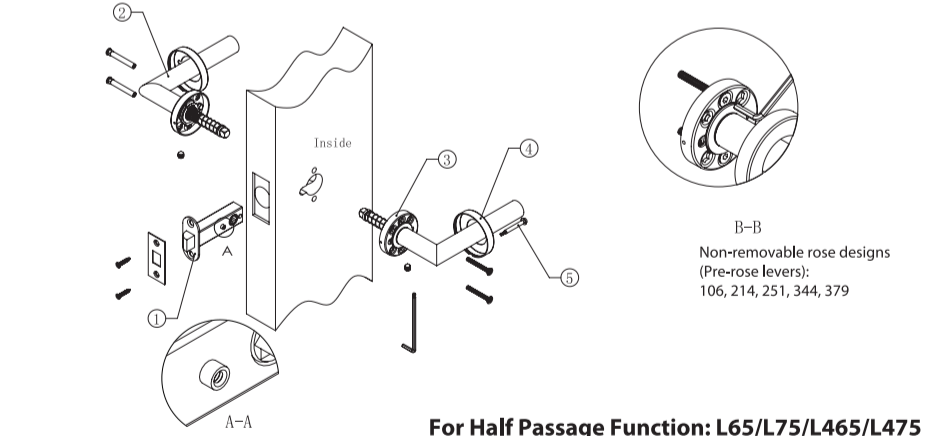
(PM-IS1100-V150101)

Determine Door Handing and Set Lock Case Direction

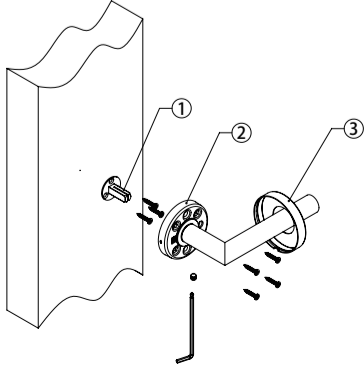


RA/SE/GT/GS Rose with Tubular Latch Installation Instructions:

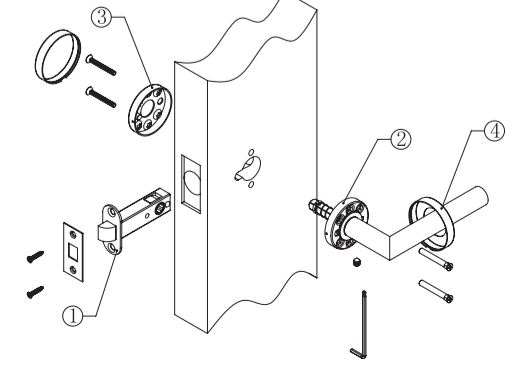
- For Passage/Privacy Function: L61/L62/L461/L462/L71/L72/L471/L472**
1. Install tubular latch with 2x #8 Screws.  
Note: For privacy, privacy pin hub with thread facing inside of door – see Section A.
  2. Install outside lever with 2 EA M4x40mm bolt sleeves.
  3. Install inside lever with 2 EA M4x35mm machine screws;  
Then tightening the set screw using allen key.  
Note: For non-removable rose designs, use M4x35mm hexagon with allen key, see Section B.
  4. Mount inside and outside rose cover (snap-on)
  5. For privacy function, insert privacy pin into latch privacy pin hub (Section A).



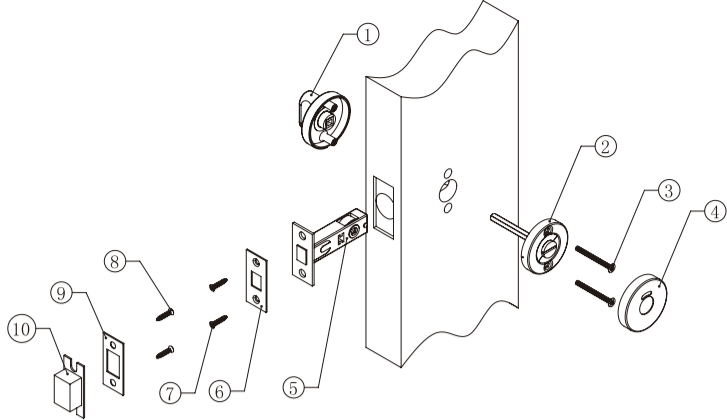
- For Dummy Function: DL or DR**
1. For RA/SE, mount dummy spindle with 3 x #6 wood screws. GT/GS does not need mount dummy spindle.
  2. Install lever with 4 x #8 wood screws  
**▲ Note: Please ensure the lever is at horizontal level before tightening wood screws.**
  3. Mount rose cover.



- For Half Passage Function: L65/L75/L465/L475**
1. Install tubular latch with 2x #8 Screws.
  2. Install outside lever with 2 EA M4x40mm bolt sleeves.
  3. Mount inside sub rose with 2 EA M4x35mm machine screws.  
Then tightening the set screw using allen key.  
Note: For non-removable rose designs, use M4x35mm hexagon with allen key, see Section B.
  4. Mount inside and outside rose cover.



GT/GS Privacy Bolt



Parts List

1. GT/GS Inside Rose with Thumb-turn

2. GT/GS Outside Less Cover

3. 2 x M4 Machine Screws

4. GT/GS Outside Cover with or without Indicator Window
5. Tubular Privacy Bolt

6. Faceplate for Privacy Bolt

7. Screws for Face plate (2 x #8 Screws)

8. Screws for Striking Plate (2 x #8 Screws)

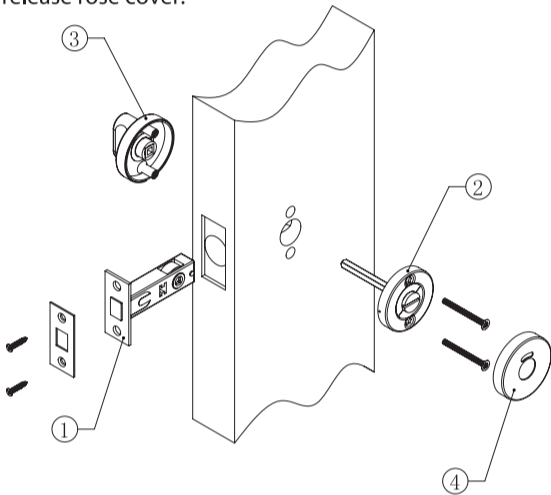
9. Privacy Bolt Striking Plate

10. Privacy Bolt Dust Box

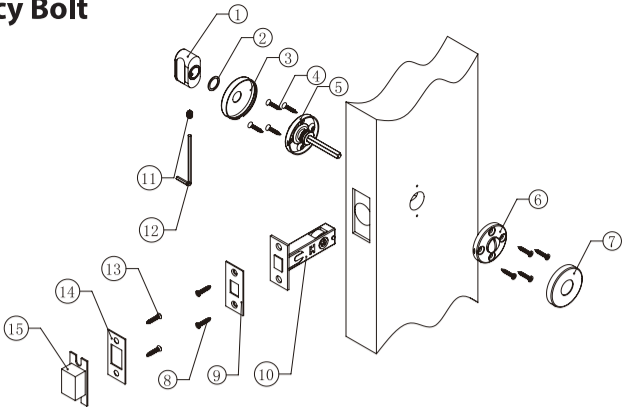
Installation Steps

1. Install tubular deadbolt latch with 2 x #8 Screws.

Note: Please ensure the latch tongue is inside latch casing.
2. Mount privacy release rose with spindle.
3. Mount privacy thumb-turn with rose and then tightening the release rose with 2 EA machine screws.
4. Mount privacy release rose cover.



GR/SR Privacy Bolt



Parts List

1. GR/SR Thumb-turn

2. Thumb-turn Washer

3. GT/SR Privacy Escutcheon

4. 8 x #6 Wood Screws

5. GR/SR Inside Less Cover

6. GR/SR Outside sub cover with release

7. GR/SR Outside Cover
8. Screws for Face plate (2 x #8 Screws)

9. Faceplate for Privacy Bolt

10. Tubular Privacy Bolt

11. Set Screw for Thumb-turn

12. Allen Key

13. Screws for Striking Plate (2 x #8 Screws)

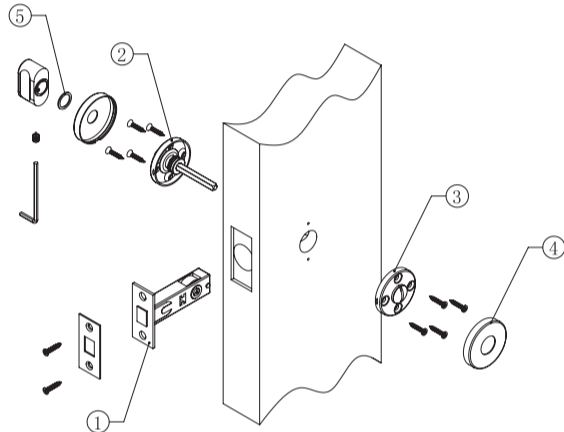
14. Privacy Bolt Striking Plate

15. Privacy Bolt Dust Box

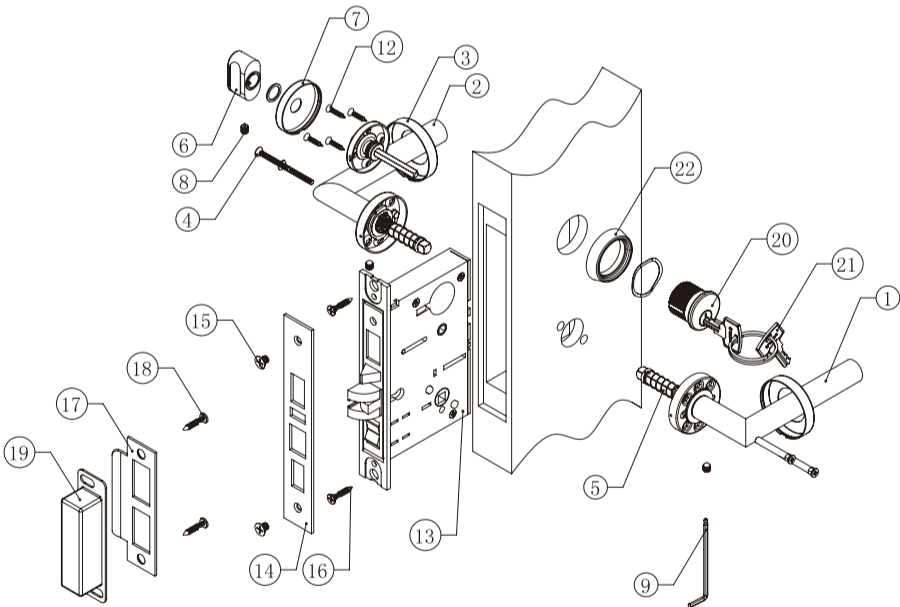
Installation Steps

1. Install tubular deadbolt latch with 2 x #8 Screws.

Note: Please ensure the latch tongue is inside latch casing.
2. Mount privacy thumb-turn rose with spindle with 4 x #6 screws.
3. Mount privacy release rose with 4 x #6 screws.
4. Mount the privacy release rose cover.
5. Mount thumb-turn rose cover and clear washer before mounting thumb-turn piece. Tighten the set screw inside thumb-turn piece using allen key.



RA/SE/GT/GS Rose with MC Mortise Lock Parts List:



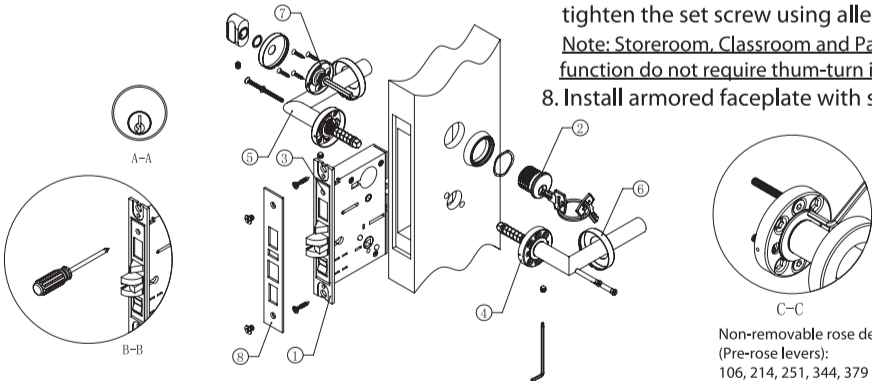
Items	No.	Parts Description	Function			
			Entry (F20/F04/F38	Classroom (F05) Storeroom (F07)	Privacy (F22)	Passage (F01)
Leverset Parts	1	RA/SE/GT/GS Roses outside w/Lever & Cover	1 EA	1 EA	1 EA	1 EA
	2	RA/SE/GT/GS Roses Inside w/Lever	1 EA	1 EA	1 EA	1 EA
	3	RA/SE/GT/GS Inside Rose Cover	1 EA	1 EA	1 EA	1 EA
	4	M4x1-3/8" (35mm) Machine Screw	2 EA	2 EA	2 EA	2 EA
	5	8x1-3/4" (45mm) spring Spindles	2 EA	2 EA	2 EA	2 EA
	6	TT04 Thumb-turn rose with Spindle	1 EA	—	1 EA	—
	7	Thumb-turn rose cover	1 EA	—	1 EA	—
	8	M6 Set Screw for t-turn	1 EA	—	1 EA	—
	9	3mm Allen Key	1 EA	1 EA	1 EA	1 EA
	10	Privacy Release	—	—	1 EA	—
	11	Privacy Release rose cover	—	—	1 EA	—
	12	#6 screws for TT04 Thumb-turn	4 EA	—	4 EA	—
Locks and Cylinders	13	Mortise Lock Case	1 EA	1 EA	1 EA	1 EA
	14	Armored Faceplate	1 EA	1 EA	1 EA	1 EA
	15	#8 screws for Armored Faceplate	2 EA	2 EA	2 EA	2 EA
	16	#10 screws for Inner Faceplate	2 EA	2 EA	2 EA	2 EA
	17	Striking Plate	1 EA	1 EA	1 EA	1 EA
	18	Screws for Striking Plate	2 EA	2 EA	2 EA	2 EA
	19	Dust Box	1 EA	1 EA	1 EA	1 EA
	20	Mortise Cylinder	1 EA	1 EA	—	—
	21	Key	2 EA	2 EA	—	—
	22	Cylinder Escutcheon Ring	1 EA	1 EA	—	—
	—	Door Prep Template	1 EA	1 EA	1 EA	1 EA
Others	—	Installation Instruction	1 EA	1 EA	1 EA	1 EA

RA/SE/GT/GS Rose with MC Mortise Lock Installation Instructions:

For Entry, Storeroom, Classroom, Passage Function:  
MC720, MC738, MC704, MC705, MC707, MC701

1. Install mortise lockcase;

Note: Do NOT tighten faceplate screws until after installing cylinder;
2. Screw on cylinder with escutcheon ring.  
Note: Key slot on cylinder should be on lower off-center position. See Section A-A  
Note: Use keys to test cylinder and make sure cylinder cam operates deadbolt smoothly.
3. Use a screw driver to tighten yoke inside lock case through faceplate to fix the cylinder in position. See Section B-B
4. Install outside lever with 2 EA M4x40mm bolt sleeves.
5. Install inside lever with 2 EA M4x35mm machine screws; Then tightening the set screw using allen key.  
Note: For non-removable rose designs, use M4x35mm hexagon with allen key. see Section C  
Note: Please ensure levers on both sides are at horizontal level before tightening machine screws.
6. Mount inside and outside rose covers (snap on).
7. For entry function, mount privacy thumb-turn rose with 4x#6 screws. Mount rose cover and clear washer before mounting thumb-turn piece. Then tighten the set screw using allen key.  
Note: Storeroom, Classroom and Passage function do not require thum-turn inside.
8. Install armored faceplate with screws.



For Privacy Function: MC722

1. Install mortise lockcase.

Note: Do NOT tighten faceplate screws until after installing cylinder.
2. Install outside lever with 2 EA M4x40mm bolt sleeves.
3. Install inside lever with 2 EA M4x35mm machine screws, then tighten the set screw using the allen key.  
Note: For non-removable rose designs, use M4x35mm hexagon with allen key. see Section C  
Note: Please ensure levers on both sides are at horizontal lever before tightening machine screws.
4. Mount inside and outside rose cover.
5. Mount privacy thumb-turn rose with spindle with 4 x #6 screws.
6. Mount privacy release rose with 4 x #6 screws.
7. Mount the privacy release rose cover.
8. Mount thumb-turn rose cover and clear washer before mounting thumb-turn piece. Tighten the set screw inside thumb-turn piece using allen key.

